



Alaska Graphite

Tech Materials for Global Ingenuity

Presentation to:

Resource Development Council

November 16, 2022

Mike Schaffner

Forward-Looking Statements

This presentation contains "forward-looking statements" which are made as of the date it is presented and Graphite One Inc. ("the Company") does not intend, and assumes no obligation, to update these forward-looking statements. Forward-looking statements include, but are not limited to, statements with regard to the actual ability to produce graphite in any form, including spherical graphite, ultimate further and final results of additional test-work, progress of the Company, the timing and successful completion of the feasibility studies, industry and Company projections regarding graphite demand, electric vehicles and power storage devices, results of studies being accurate regarding characteristics of the Graphite Creek mineralization, the timing, amount and success of future exploration and exploitation activities, and events or developments that the Company expects.

Information concerning measured, inferred and indicated mineral resource estimates also may be deemed to be forward-looking information in that it reflects a prediction of the mineralization that would be encountered if a mineral deposit were developed and mined. Although the Company believes the expectations expressed in such forward-looking statements are based on reasonable assumptions, such statements are not guarantees of future performance and actual results or developments may differ materially from those in the forward-looking statements.

Forward-looking statements involve known and unknown risks, uncertainties and other factors which may cause the actual results, performance or developments of the Company to be materially different from those in the forward-looking statements. Such factors include, among others, results of product development test work may not be indicative of the advancement of the project as anticipated, or at all, market prices, exploitation and exploration successes, continuity of mineralization, uncertainties related to the ability to obtain permits, licenses and title delays, changes in government policies regarding mining and natural resource exploitation, accidents, labour disputes and other risks of the mining industry; ability to get or delays in obtaining capital and financing, and general economic, market or business conditions.

Readers are cautioned not to place undue reliance on this forward-looking information, which is given as of the date presented. For more information on the Company, investors should review the Company's continuous disclosure filings that are available at www.sedar.com.

Key Facts:

Graphite consumption is projected to increase 10X in the next 10 years.

The Average electric car battery contains 200 pounds of Graphite

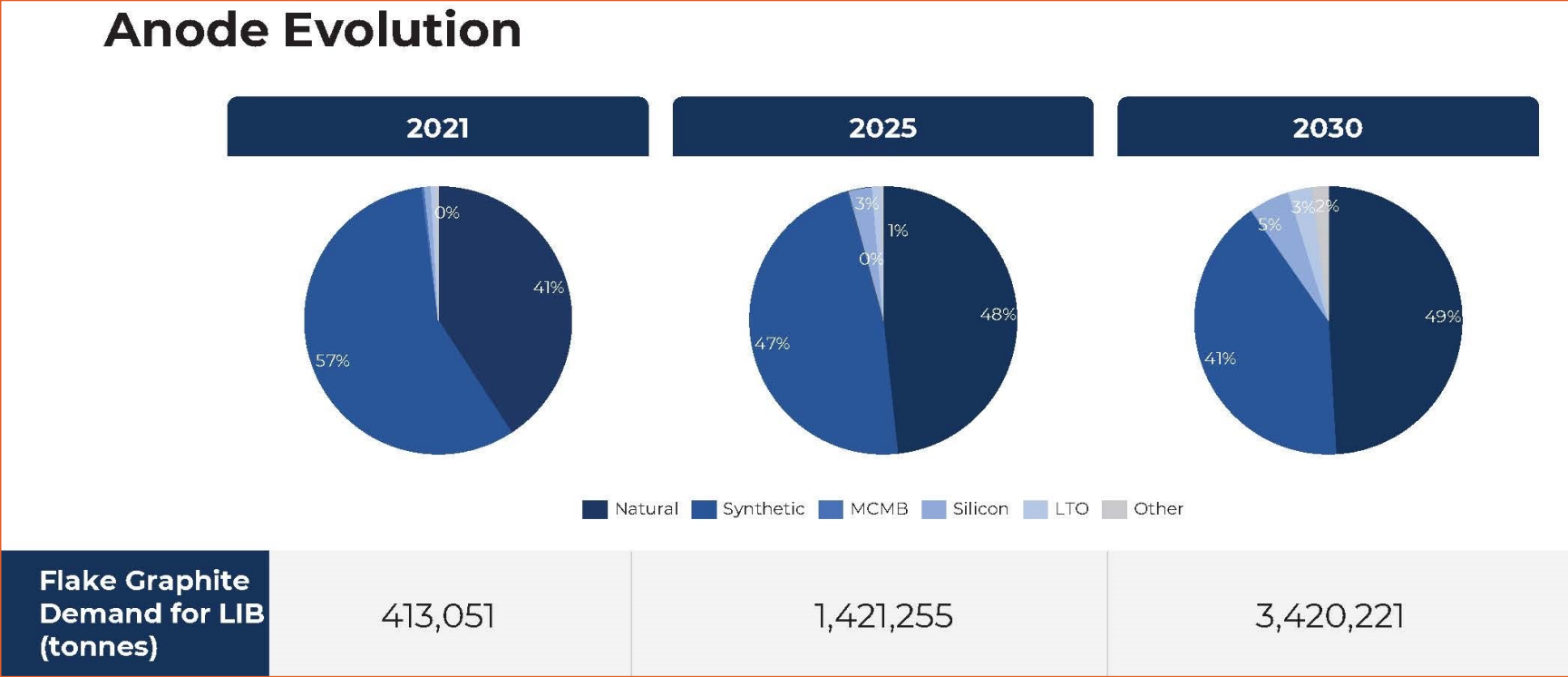
Graphite is listed as a critical mineral and there is NO graphite mining in the United States

China mines over 70% of global graphite and produces 90% of all electric car batteries.

The Graphite Creek Deposit was named the largest graphite deposit in the United States by the USGS

Graphite One plans to develop an integrated mine and secondary treatment plant to produce Graphite anode material in the United States

Demand Forecast for Flake Graphite in Anodes to 2030



Q4 2021  BENCHMARK
MINERAL
INTELLIGENCE

Graphite Creek Deposit Location

★ Project Site

○
NOME

ALASKA

Graphite One 

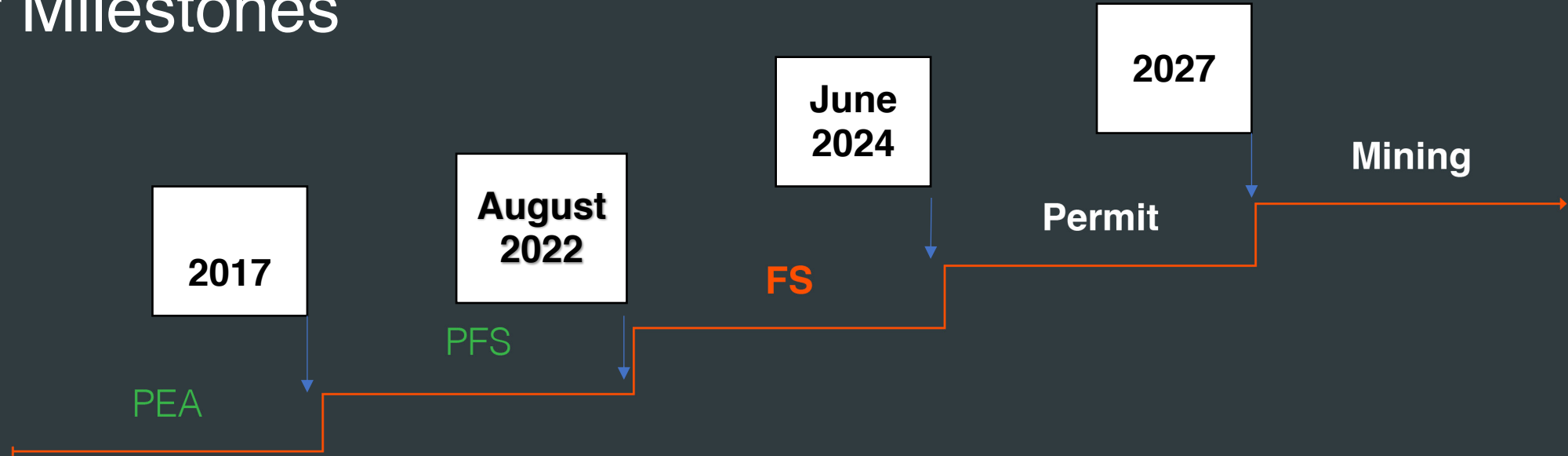




Graphite Creek Deposit
Kigluaik Mountains
37 miles North of Nome

Graphite One 

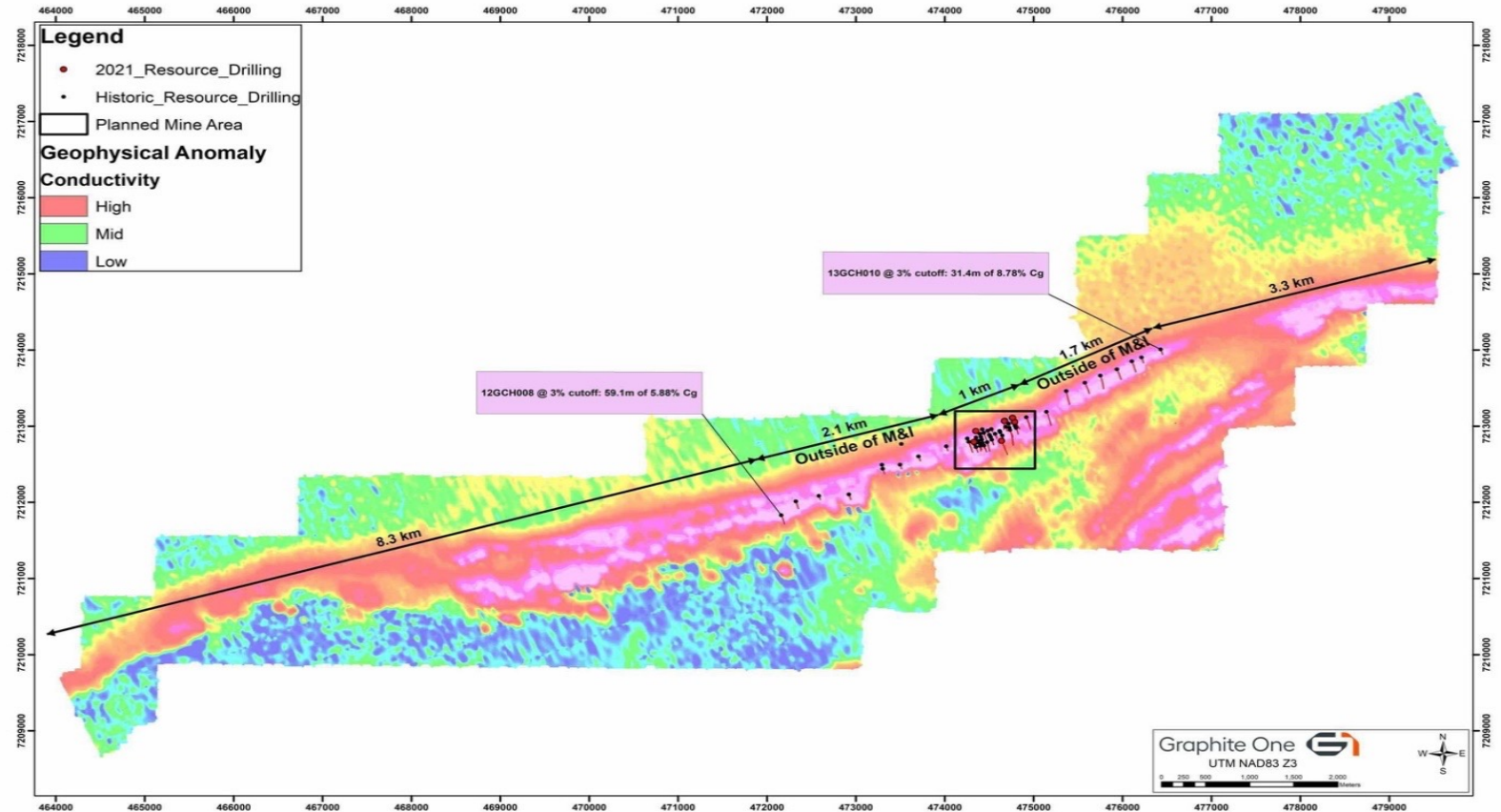
Graphite Creek Project Major Milestones



Deposit

- Ore-grade graphite occurs in a schists
- Graphite-bearing schists are exposed for a strike length of 3.1 miles
- Conductivity anomaly extends for 9.8 miles
- Total project drilling of 40,590 feet

Figure 1: Planned Mining Area and Completed Drilling Superimposed on Conductivity Survey Results



2022 Resource Estimate

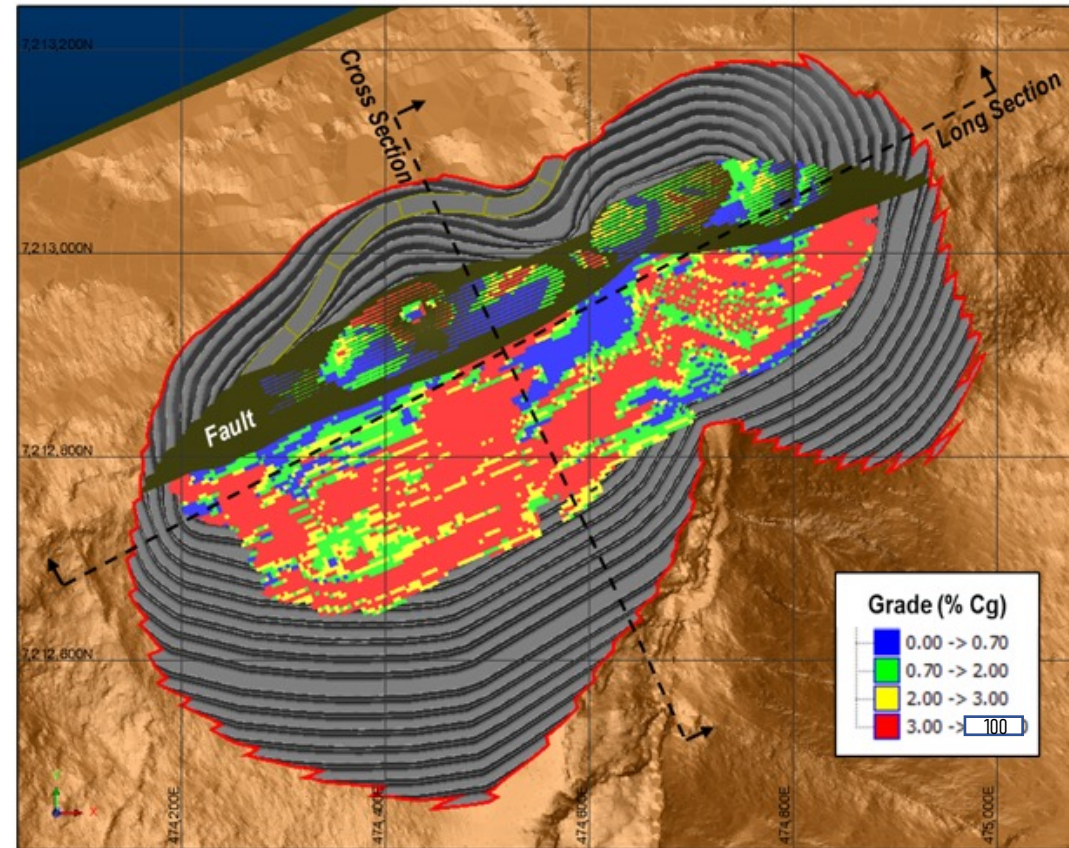
Table 4: PFS 2022 Resource Estimate

MINERAL RESOURCE CLASSIFICATION	TONNAGE (Million Tonnes)	GRAPHITE GRADE (% Cg)	CONTAINED GRAPHITE (Tonnes)
Inferred	254.67	5.11%	13,004,017
Indicated	27.87	5.15%	1,435,135
Measured	4.67	5.83%	272,205
Measured + Indicated	32.54	5.25%	1,707,340

Mine Design

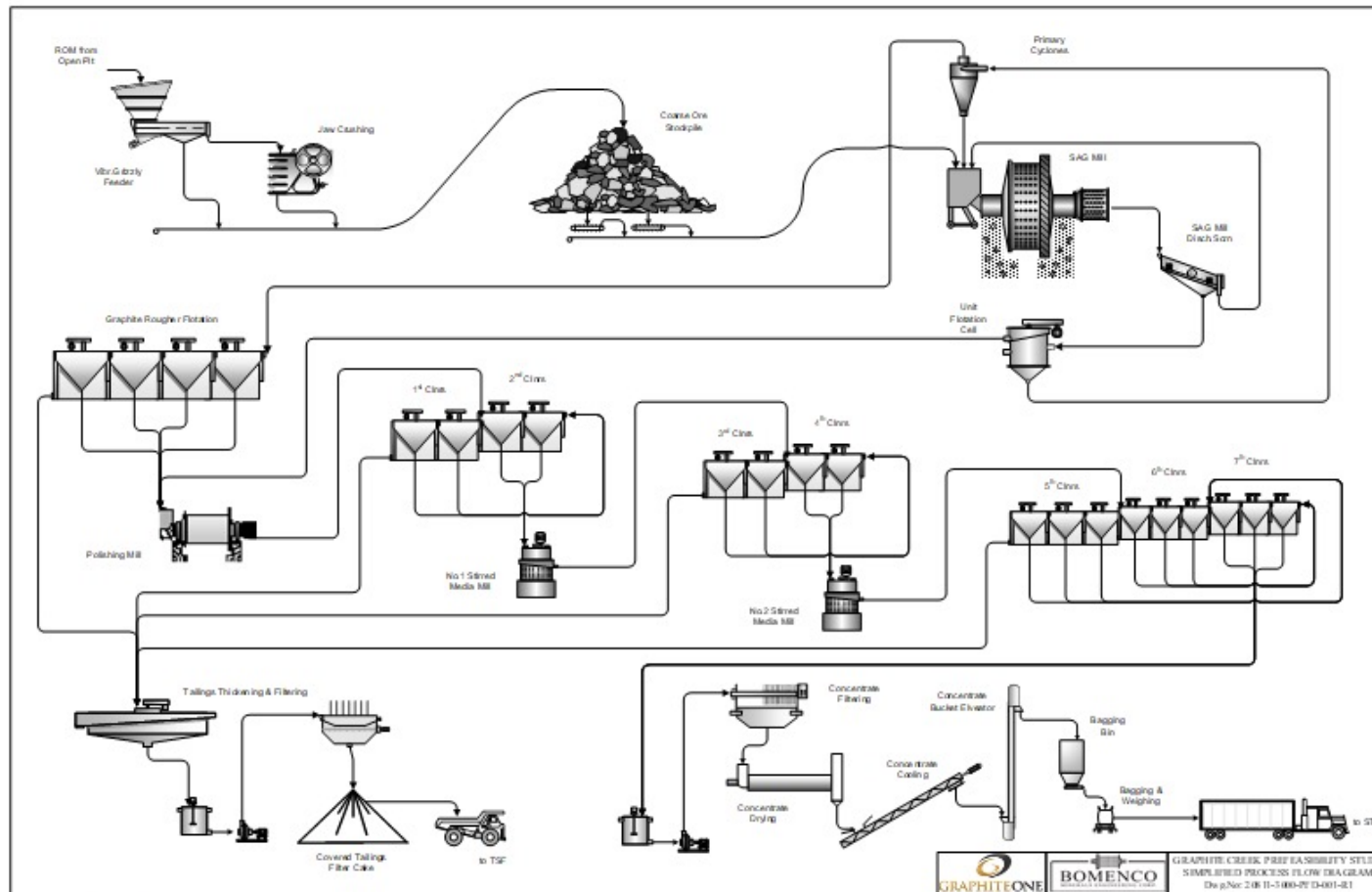
- The mine is designed as an open pit with a strip ratio of 2.2:1
- The material will be mined on 24' benches
- Year-round operations
- Pit will be mined at 10,000 TPD of ore and waste
- A cut-off grade of 2% will be used, increasing to 3% towards the end of the project

Figure 15-4: Measured and Indicated Resources Relative to the Final Pit Design



Milling Flowsheet

Figure 17-1: Simplified Process Flow Diagram



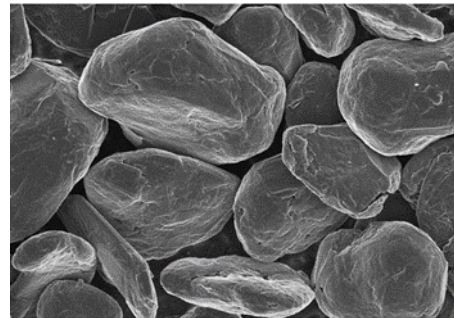
Statistics:

- 1m tons/year feed @ 5.2% Gr
- 250 Um grind
- 7 stages of flotation
- 92% graphite recovery
- 95% final graphite grade
- 53,000 tons/year of graphite

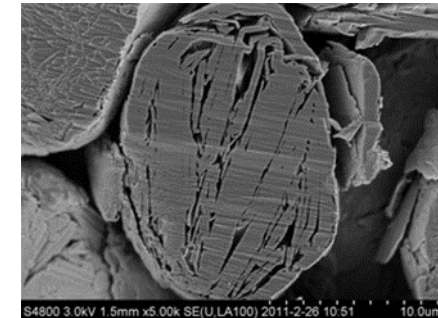
Source: [Bomenco](#) (2022)

Secondary Treatment Plant

- Graphite Creek concentrate to be shipped to the STP in Washington State.
- Location to be finalized
- Hydroelectric power will be used to mill, shape, and purify/graphitize input materials into the following products (planned production capacity, two phases):
 - Anode materials for Li-ion batteries: 4 anode products; 56,400 tons per year
 - Purified graphite products (99% Cg) for specialty markets: 8,360 tons per year
 - Unpurified graphite products (95% Cg) for traditional markets: 20,530 tons per year
- Total: 85,290 tons per year



SEM Picture of CPSG



Coating layer from
CPSG cross section

2022 Prefeasibility Study

- Designed at 2,800 TPD mill
- 10,000 TPD mine
- 53,000 TPY of 95% Graphite concentrate
- 23-year mine life

- Concentrate shipped to Secondary Treatment Plant (STP) in Washington State, which produces 99.9% graphite

- The project shows a post tax NPV of \$1.36B with and IRR of 22%



Ongoing Community Engagement

- Graphite One believes involving the local communities is crucial for a successful project.
- Community meetings held since 2012 in:
 - Teller
 - Brevig Mission
 - Nome
- Subsistence Advisory Committee (SAC)
- “It’s not just about listening; it’s about incorporating what you hear into a successful operation.”



2022 Field Camp and Program

- Increased Graphite Creek Camp from 24 to 60-person camp
- Established 24-person base camp in Nome
- Completed environmental baseline work including fish studies, raptor surveys, stream study, Imuruk Basin salinity & bathymetric work, acid-waste and pit-water testing
- Geotechnical drilling for mill site, tailings area, access road and construction material
- Resource drilling
- Community engagement meetings
- PFS completion



Goals for 2023 Program:

- Continue environmental work for permitting efforts
- Continue Community and Subsistence Advisory Committee (SAC) meetings
- Complete additional drilling to increase the proven and provable reserves
- Begin Feasibility Study in Q3 '23
- Complete required geotechnical drilling for road, tails, mill and pit sites



Thank You

Mike Schaffner,
Sr. Vice President of Mining
(775) 304-5412

mschaffner@graphiteoneinc.com

Anthony Huston,
President, CEO + Director
(604) 697-2862

ahuston@graphiteoneinc.com

