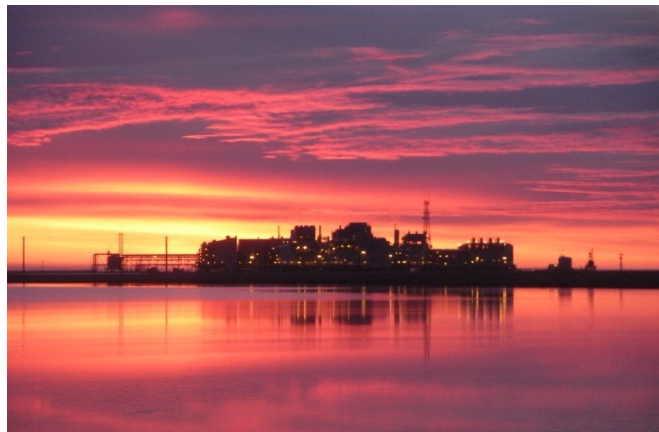




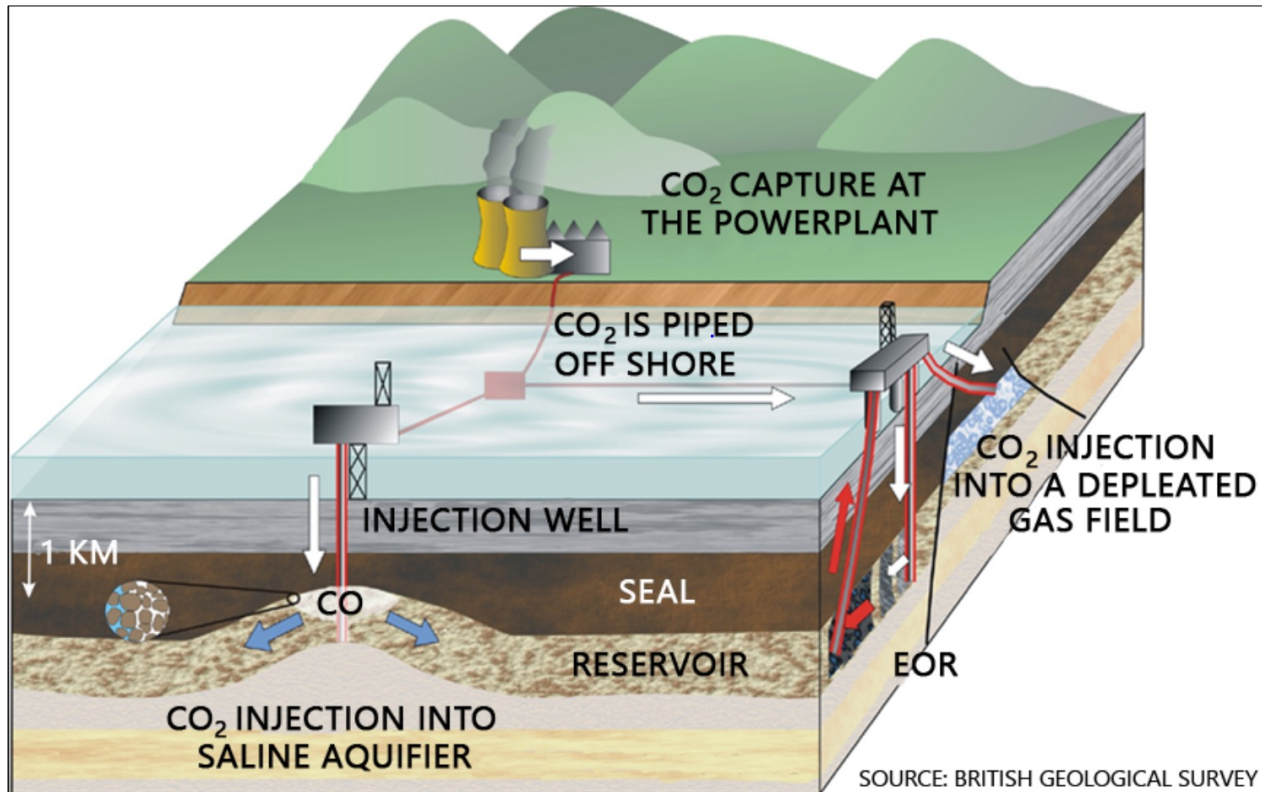
# CARBON CAPTURE UTILIZATION & STORAGE FOR ALASKA

RDC Annual Conference

Presented by Haley Paine  
Deputy Director  
Alaska Division of Oil and Gas  
November 17, 2022



# KEY COMPONENTS



---

**Geology**

---

**Sources & Sinks**

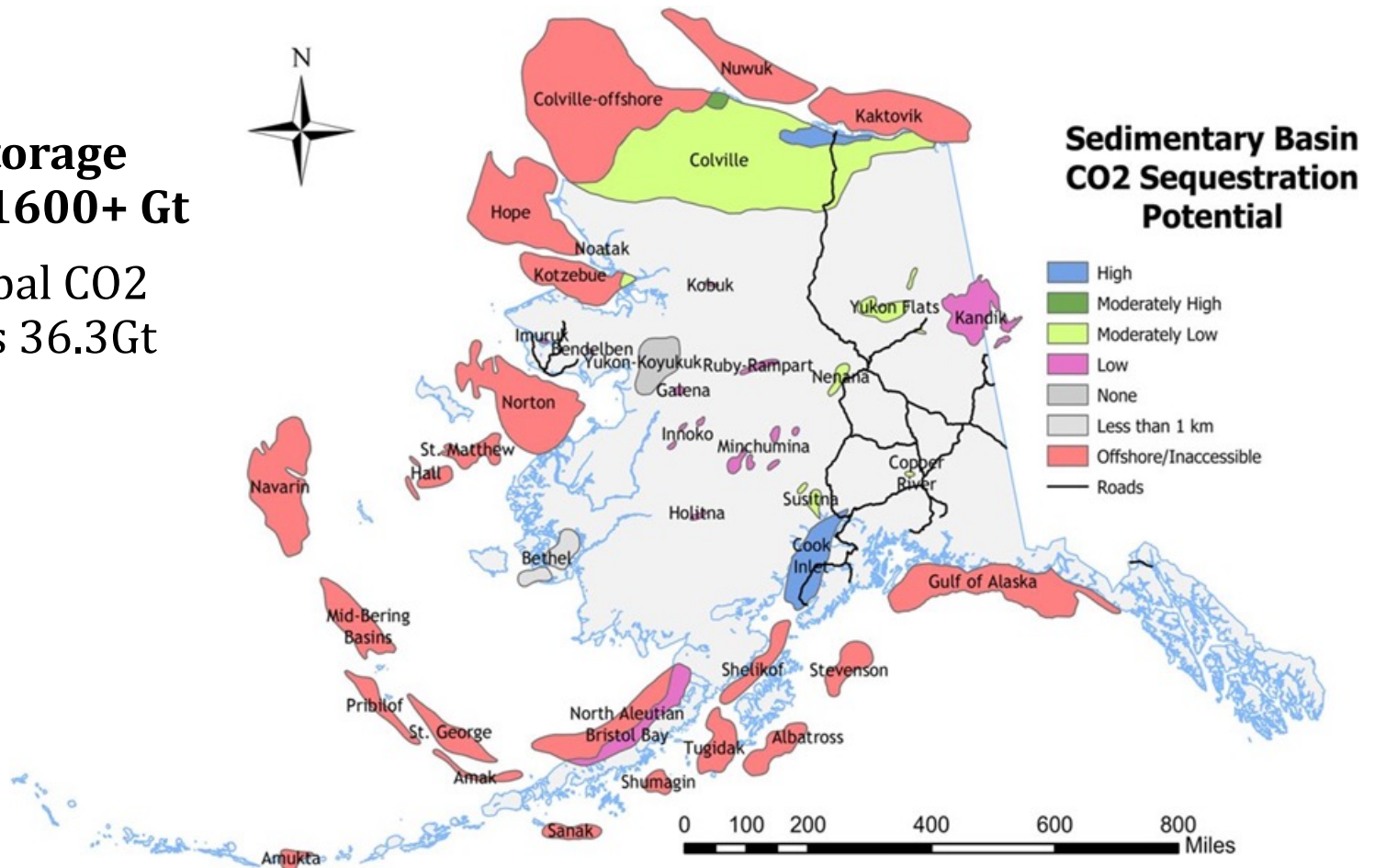
---

**Regulatory Framework**

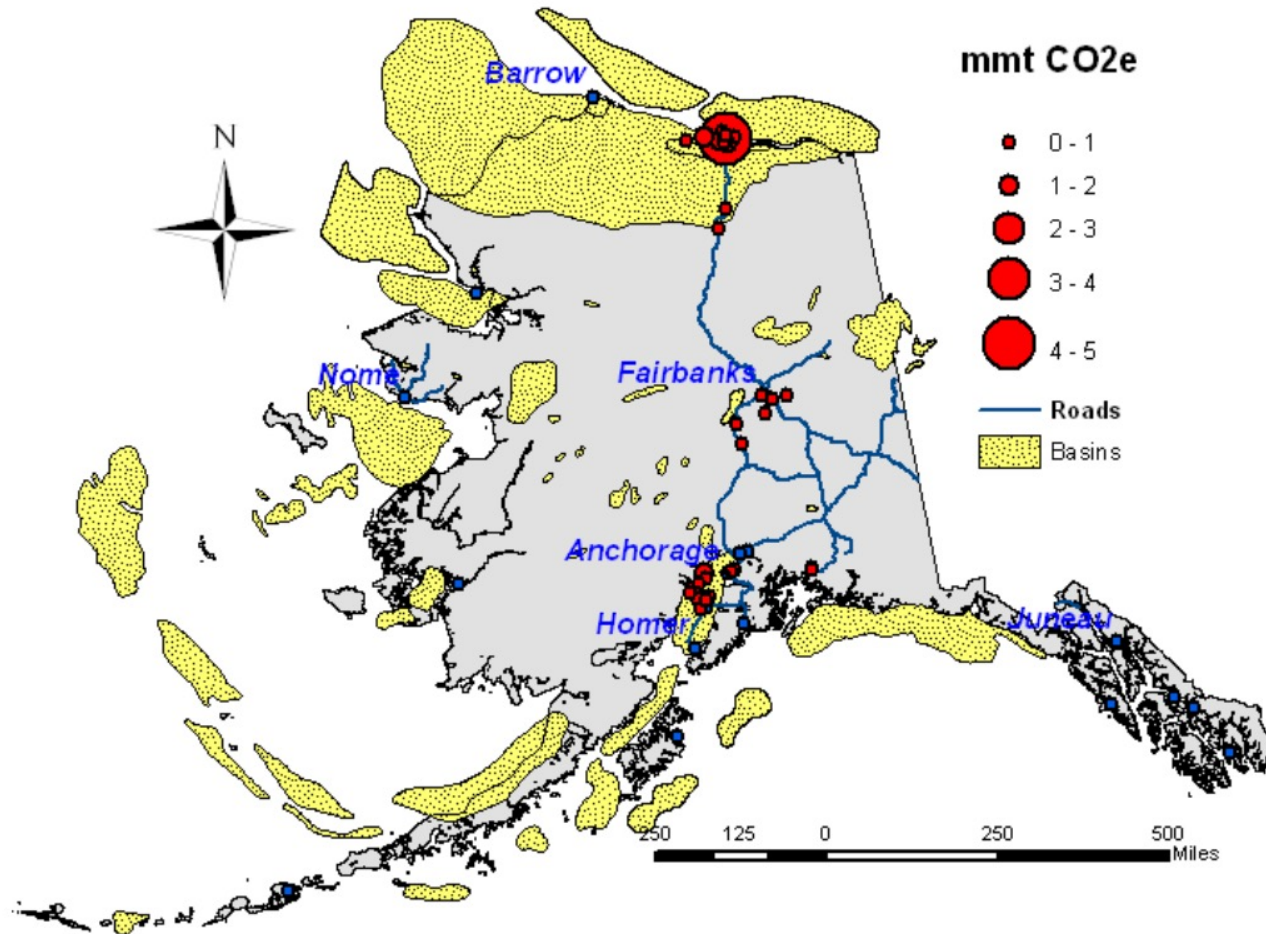
# GEOLOGIC POTENTIAL

## Geologic Storage Potential: 1600+ Gt

- 2021 Global CO<sub>2</sub> emissions 36.3Gt

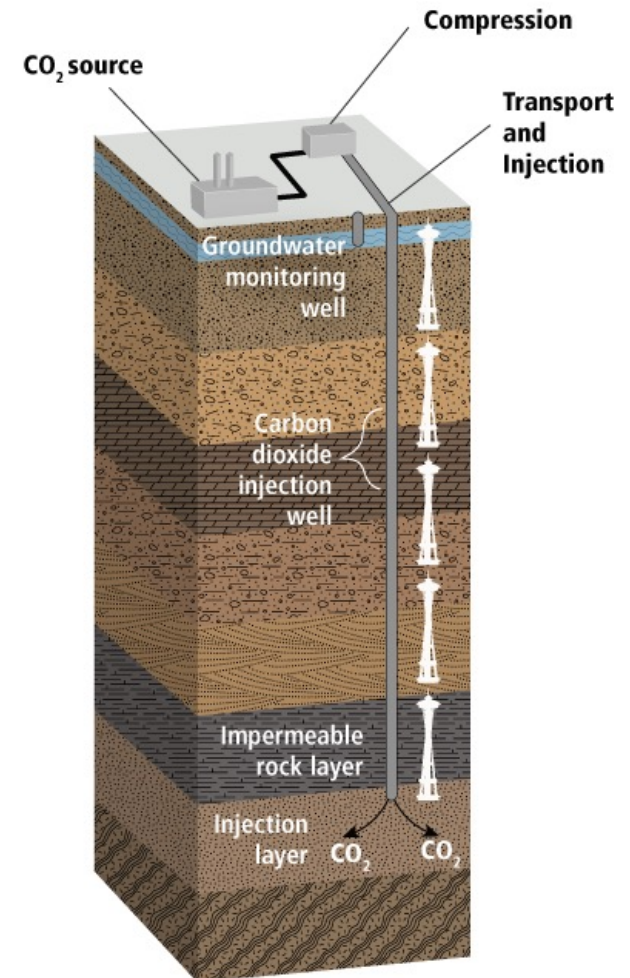


# SOURCES AND SINKS

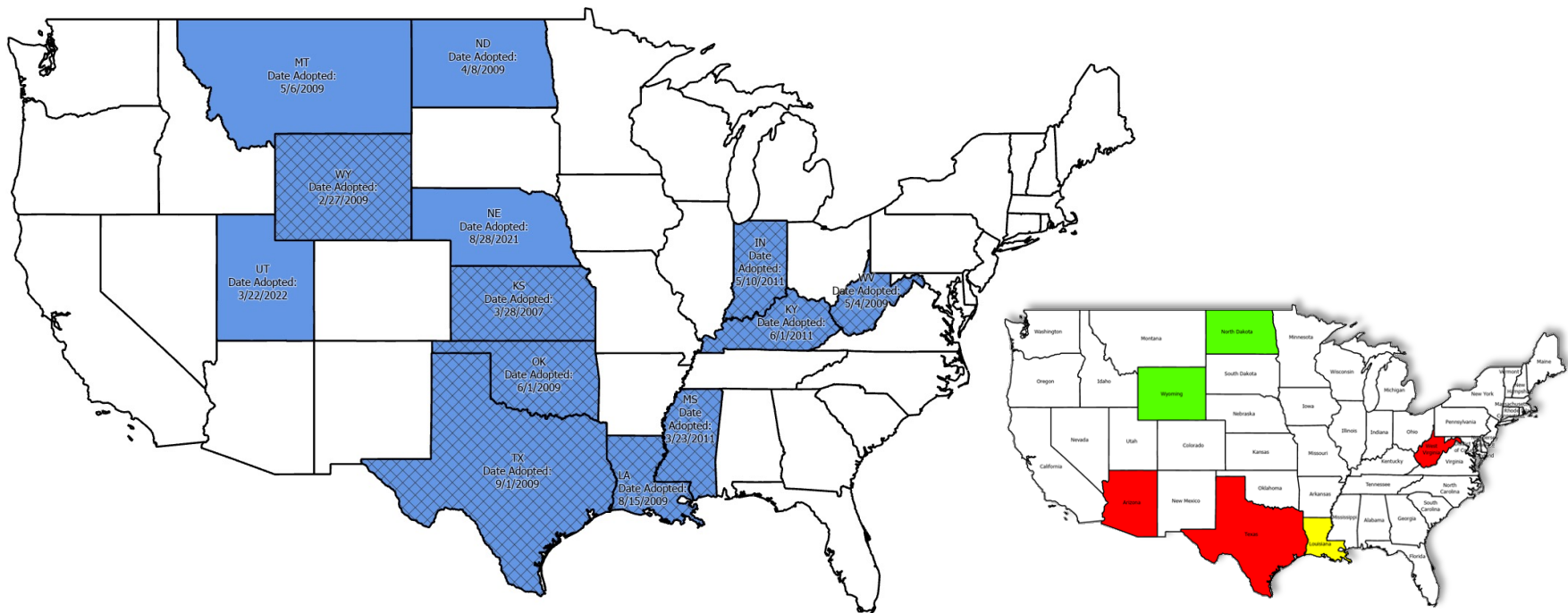


# REGULATORY FRAMEWORK

- Provides for the use of public lands for CCUS
- Accounts for the amalgamation of property interests and protection of correlative rights
- Outlines relationship between other commercial minerals and reservoirs to be used for storage
- Defines ownership of carbon dioxide and ascription of liability
- Addresses authority for USDW Class VI well primacy
- Accounts for state tax structure on projects



# STATES WITH CCUS LEGISLATION



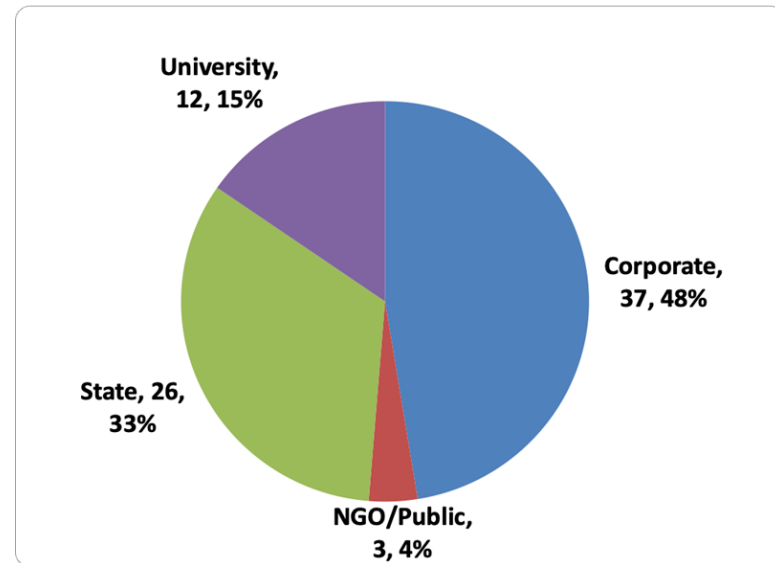
⊗ Legislation Recently Updated  
■ States with Comprehensive Legislation

■ Class VI Primacy Approved  
■ Class VI Pending Application  
■ Class VI Pre-Application

# STATEWIDE CCUS WORKGROUP

## Workgroup Committees

1. Regulatory framework.
2. Government engagement and funding opportunities
3. CCUS Roadmap
4. Public outreach



**Institute of Northern Engineering**  
University of Alaska Fairbanks



# QUESTIONS?

