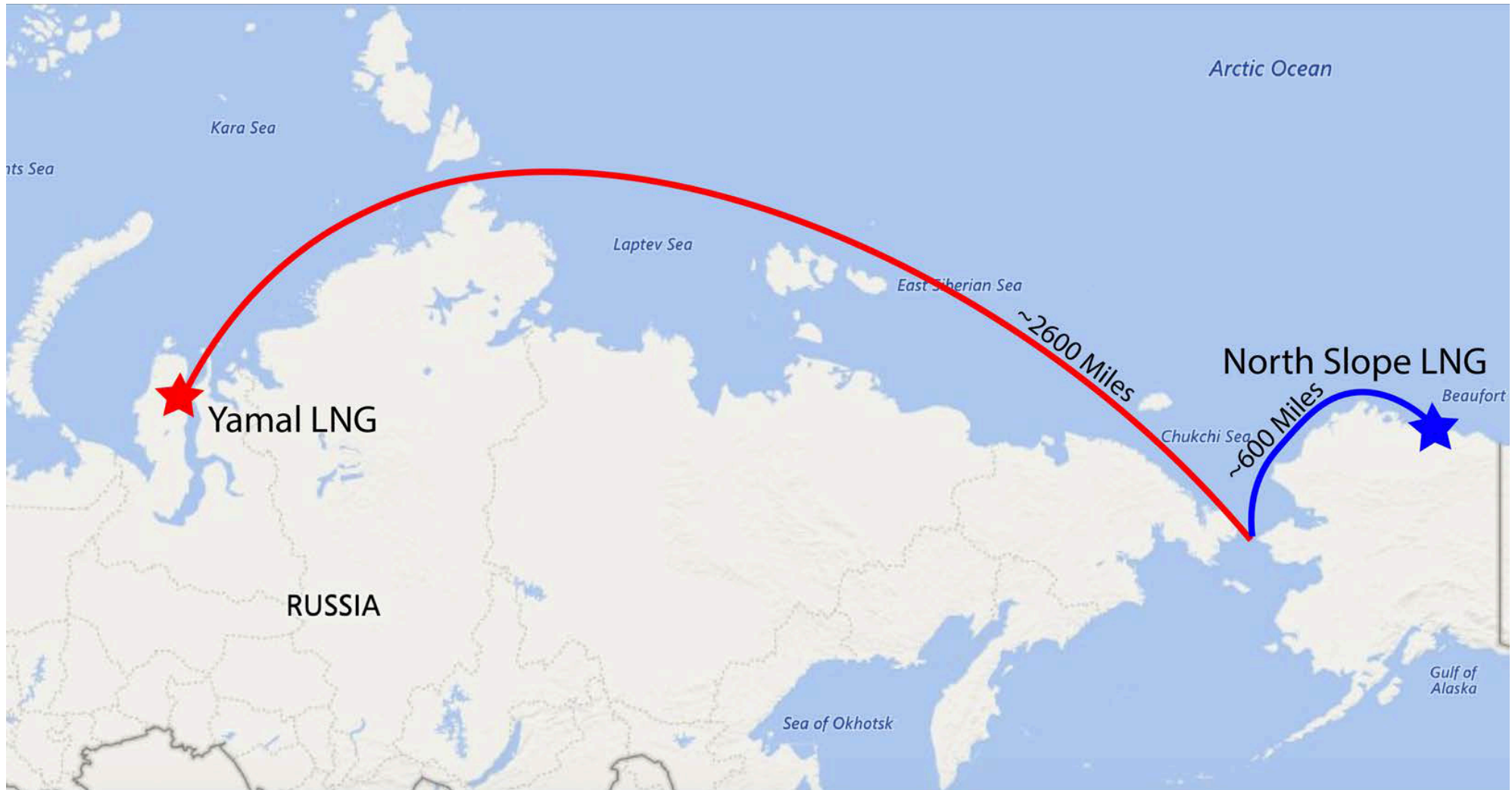




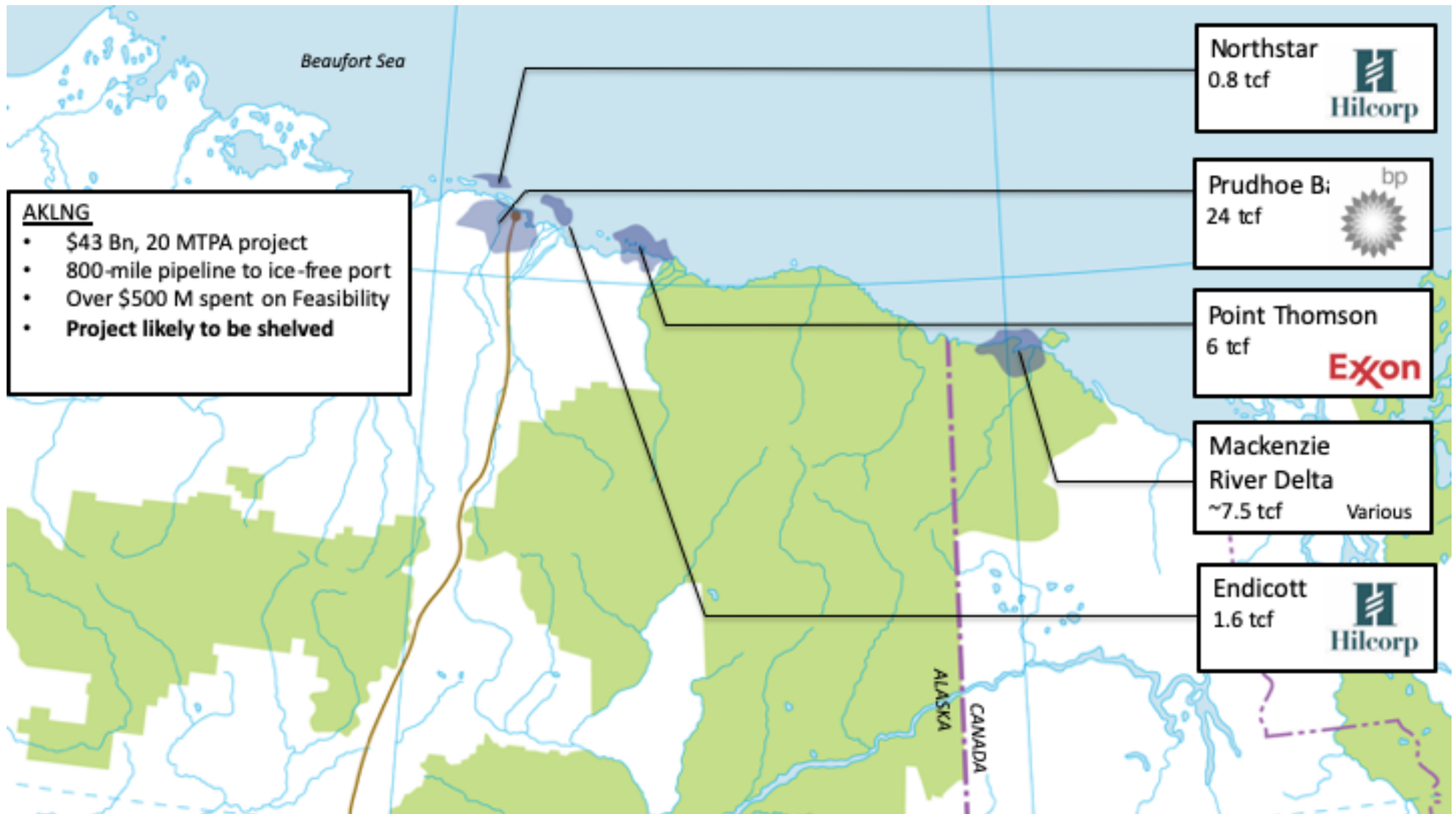
Qilak LNG

# Arctic LNG – A Proven Concept



- Yamal LNG is a 2,600 mile trip from Yamal to the Bering Strait (where sea ice dissipates), whereas Qilak LNG would be only 600 miles

# Potential Gas Supplies for AKLNG and Qilak LNG

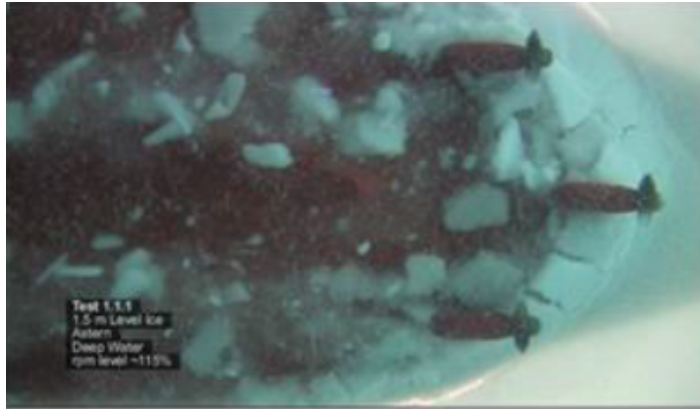


# LNG Shipping Solution





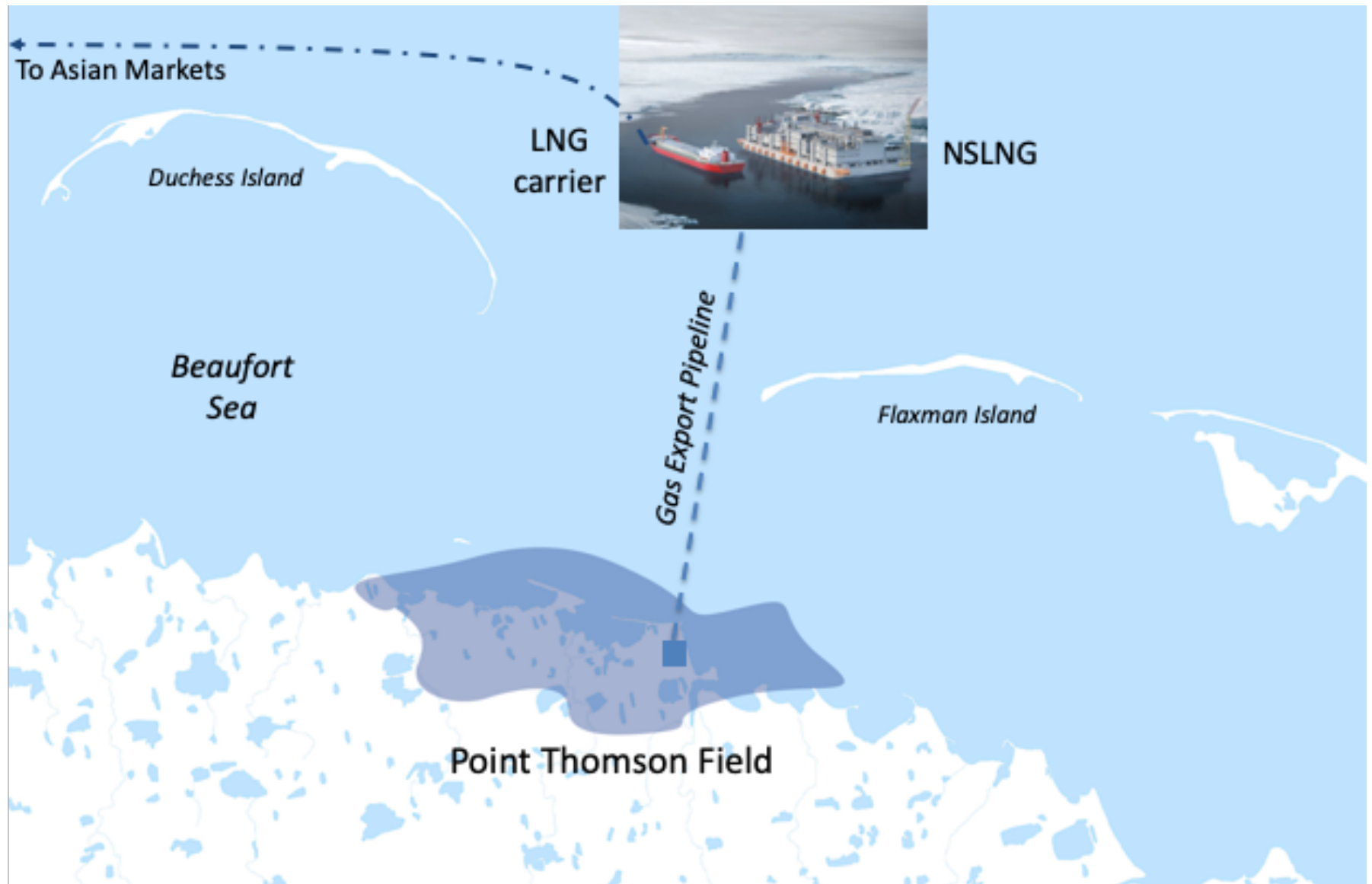
# Yamal Dual Acting LNG Carrier Azipods



**View taken from below the vessel in ice test tank**

**Ice breaking stern of LNG Carrier with three 15MW Azipods**

# Gravity Based Structure - Locations offshore Flaxman Island



# Three fundamentally different development concepts are currently being evaluated

1



Gravity-based structure

2



Ice resistant port

3



Grounded NSLNG facility



# LNG Shipping to Asian Markets







Qilak LNG

[www.qilaklng.com](http://www.qilaklng.com)

Mead Treadwell, Chairman and CEO [mt@qilaklng.com](mailto:mt@qilaklng.com)

David Clarke, President and COO, [dc@qilaklng.com](mailto:dc@qilaklng.com)