

**ALASKA**  
RAILROAD

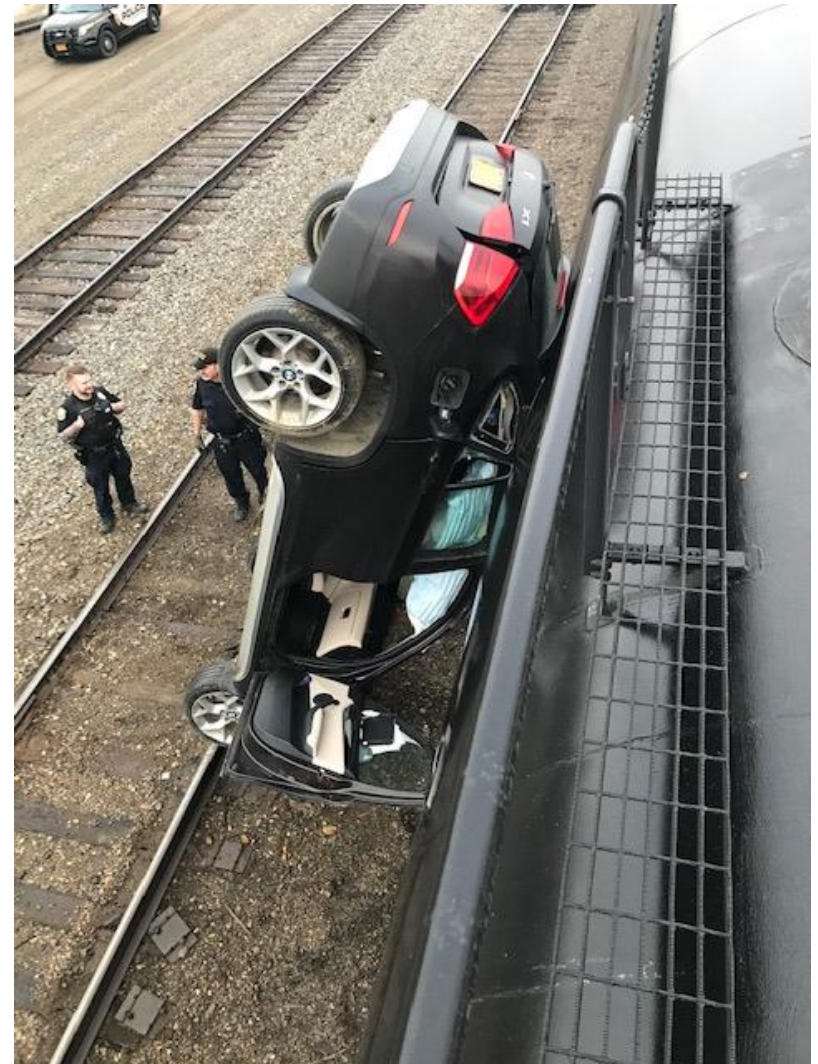
# The Alaska Railroad: Roaring into the Twenties



[AlaskaRailroad.com](http://AlaskaRailroad.com)

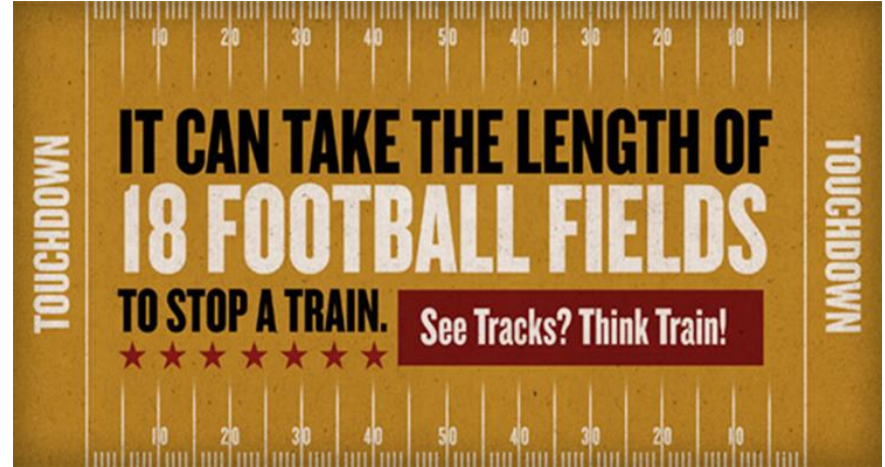


# ➤ Safety Minute





# ➤ Safety Minute



# Quick Facts

## Organization (following State purchase)

- Independent corporation owned by State
- Managed by a seven-member board of directors appointed by Governor
- Mandated to be self-sustaining, responsible for financial and legal obligations

## Operating Data

- 656 Total miles of track
- 912 Freight cars (owned & leased)
- 44 Passenger cars
- 51 Locomotives

## 2019 Operating Statistics

- 521,687 passengers
- 3.5 million tons of freight

## Employees (January 2019)

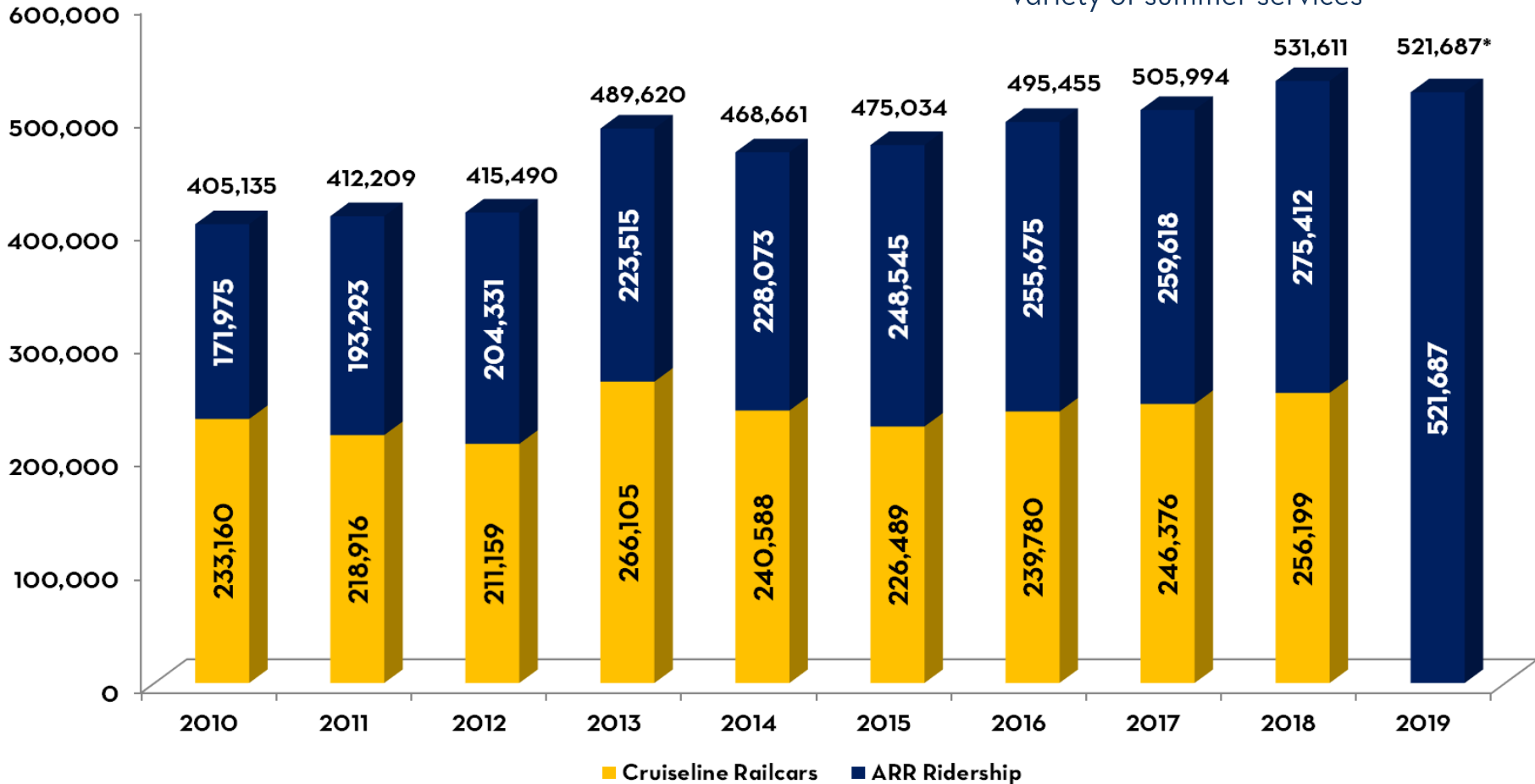
- 610 full-time year-round employees
- 518 members of 5 unions



# Passenger Operations

Passenger Service Steady

- 2019 Up 30% over 2010
- Near max capacity on south end
- Variety of summer services

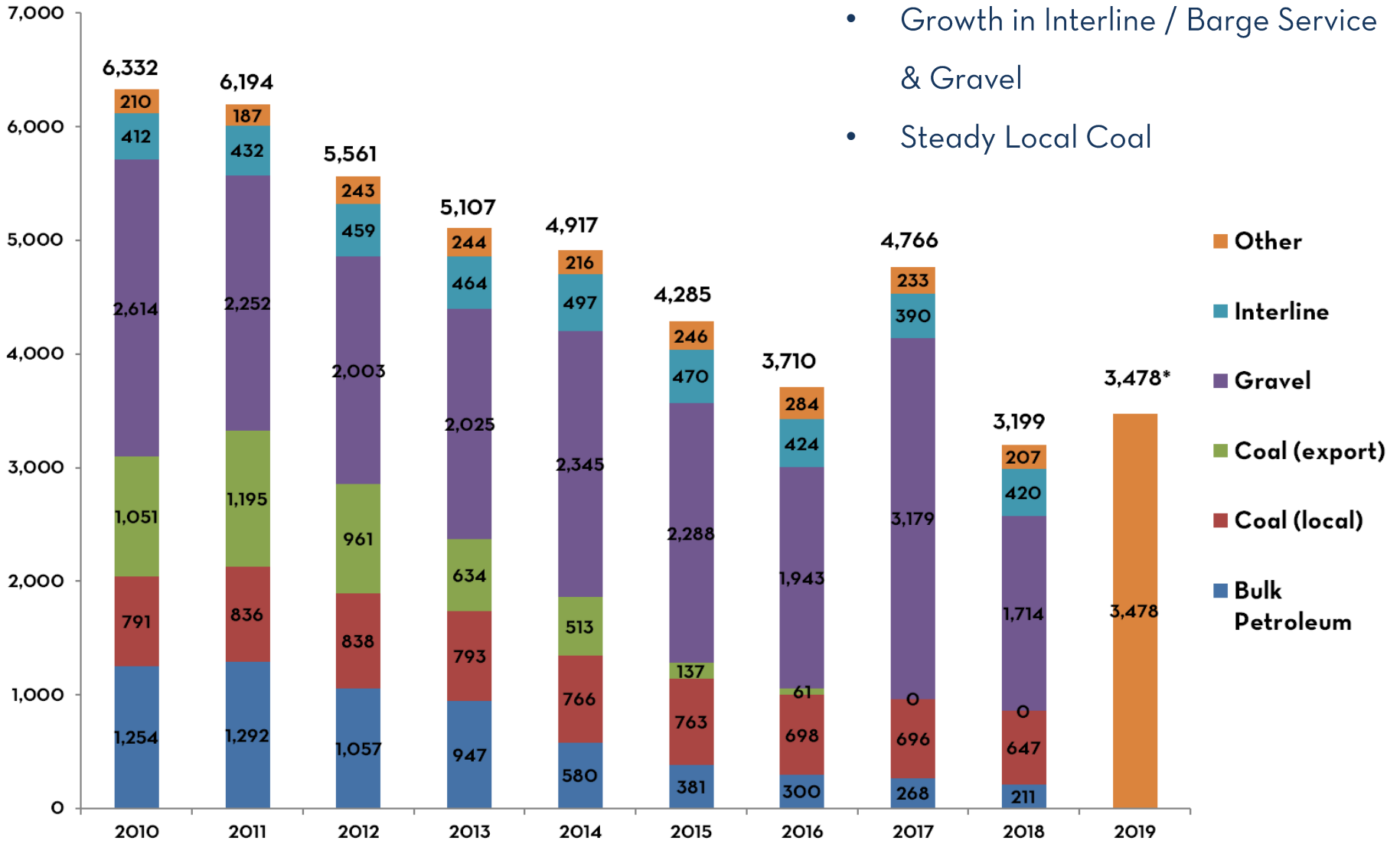




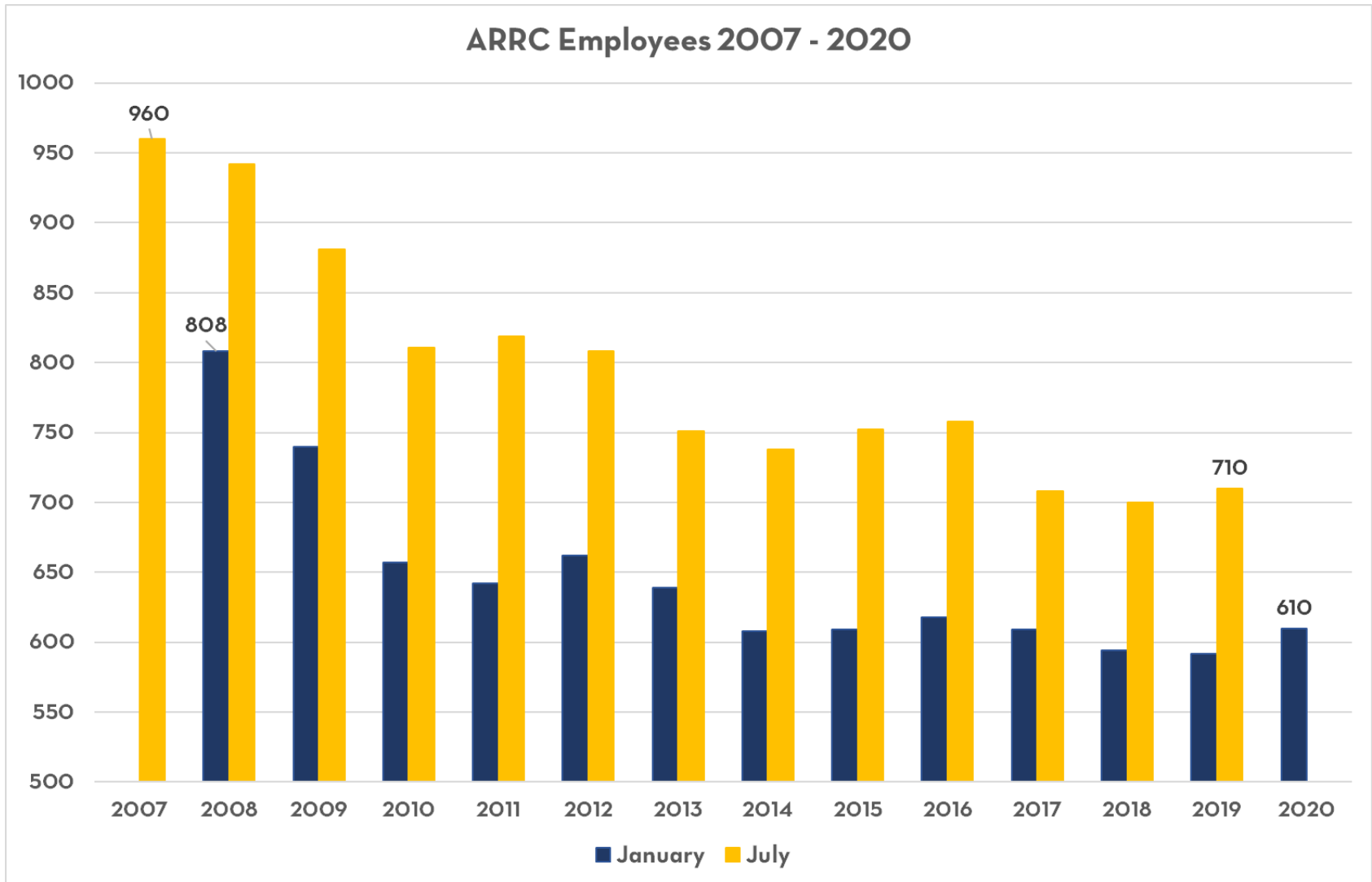
# Freight Operations

## Freight recovering

- Growth in Interline / Barge Service & Gravel
- Steady Local Coal

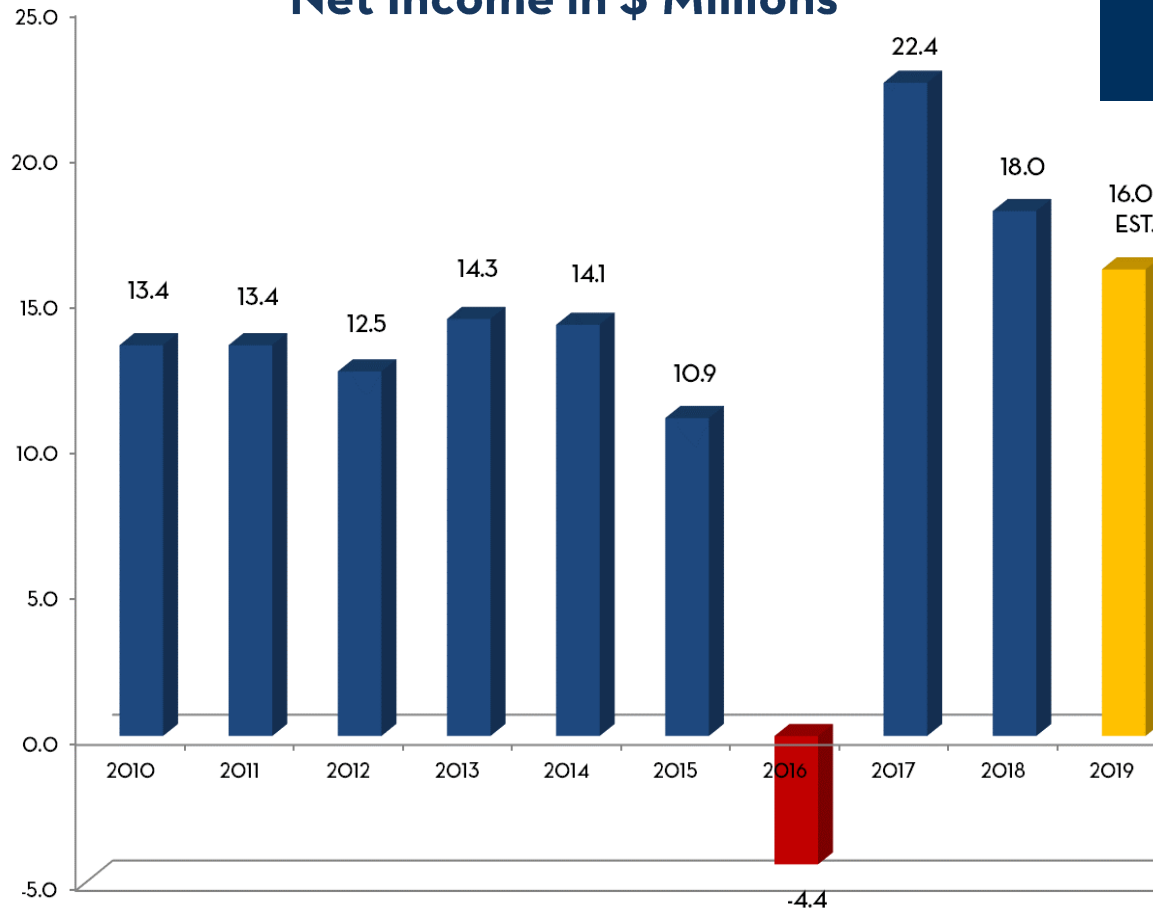


# Employee Reductions



# > The Bottom Line

Net Income in \$ Millions



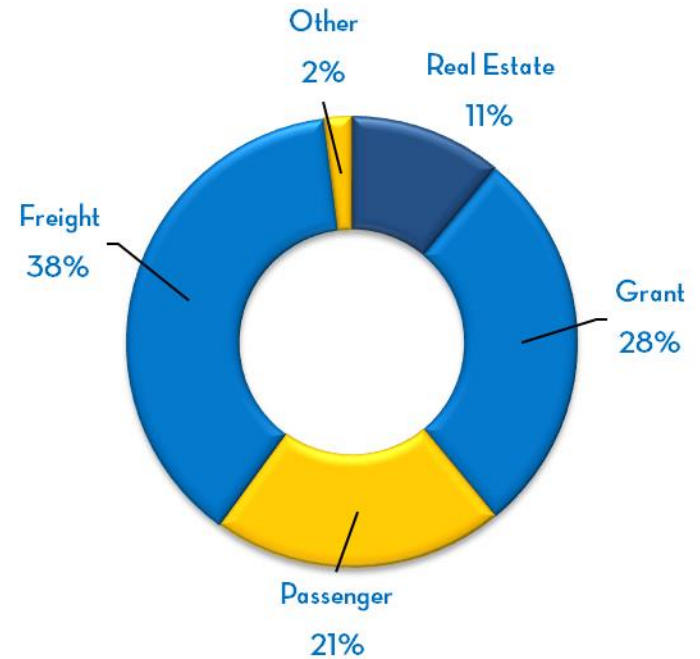
**2018 Financial Stats**

**Total Assets - \$1.096 Billion**

**Revenue - \$181.4 Million**

**Net Income - \$18.0 Million**

2018 Revenue Breakdown





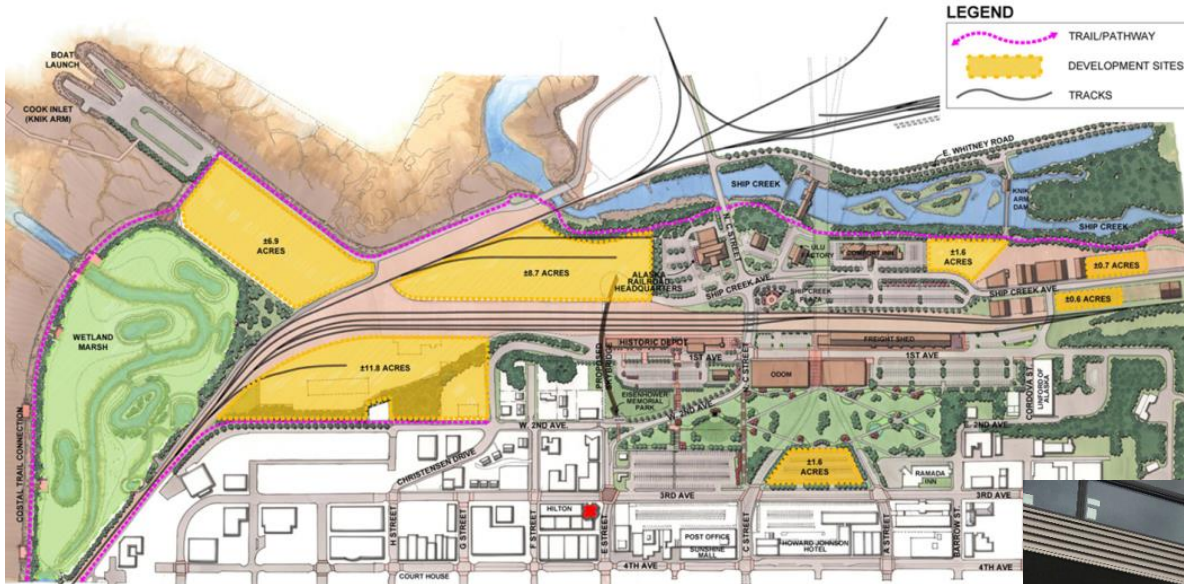
# ➤ Opportunity for Investment



- Deferred Maintenance
  - Tie Replacement
  - Bridge Program
- Flat Cars
- Van Loaders



# Ship Creek Development

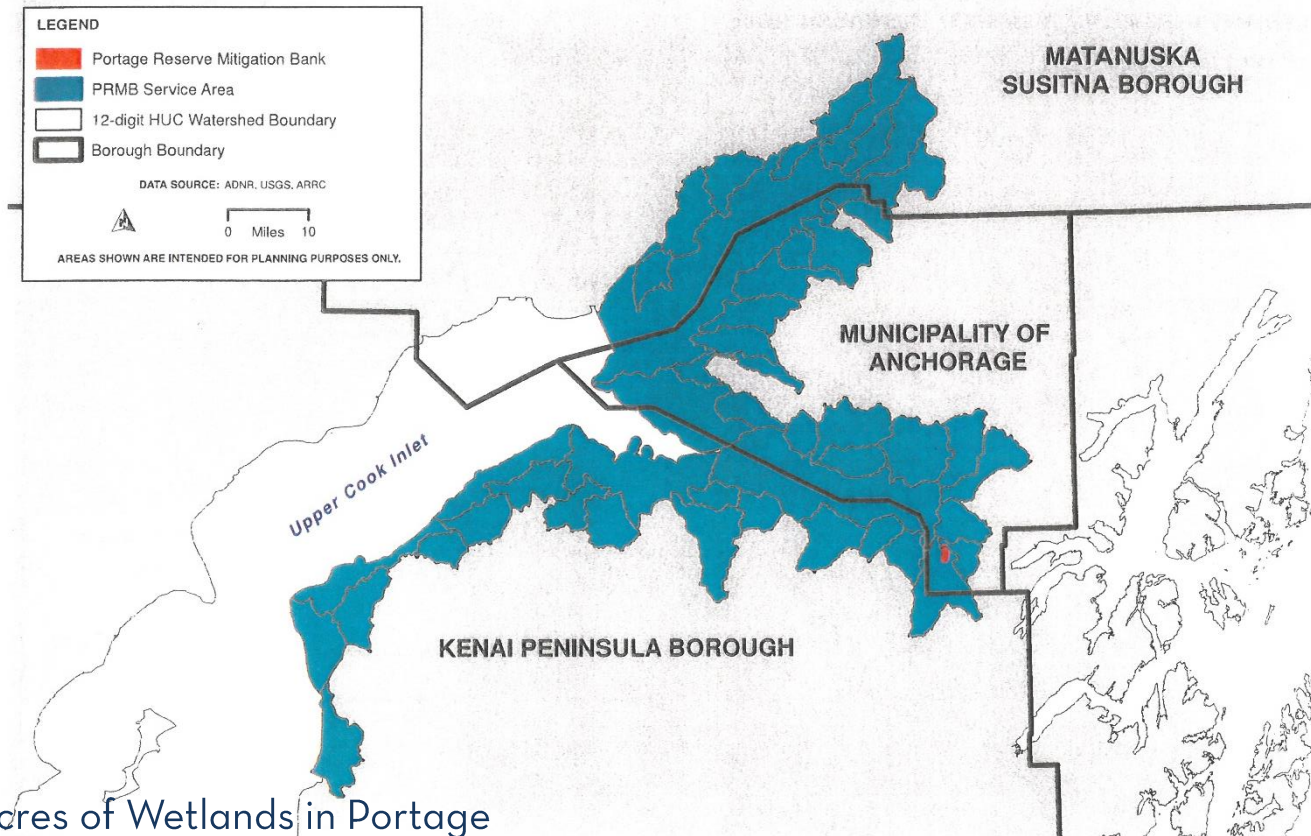


- Edge Condominiums
- 49<sup>th</sup> State Brewery
- Knik Arm Power Plant





# Wetlands Mitigation Bank



- 250 Acres of Wetlands in Portage
- 149 Credits
- Reduce construction expenses for ARRC and other agencies such as DOT
- 3 years to develop



# Recent Land Sales



- Tri-Valley Subdivision
- Otto Lake
- Chena Landings
- Port of Alaska, Anchorage
- **PENDING**
- Neighborworks
- Whittier Manor



# ➤ Seward Passenger Dock

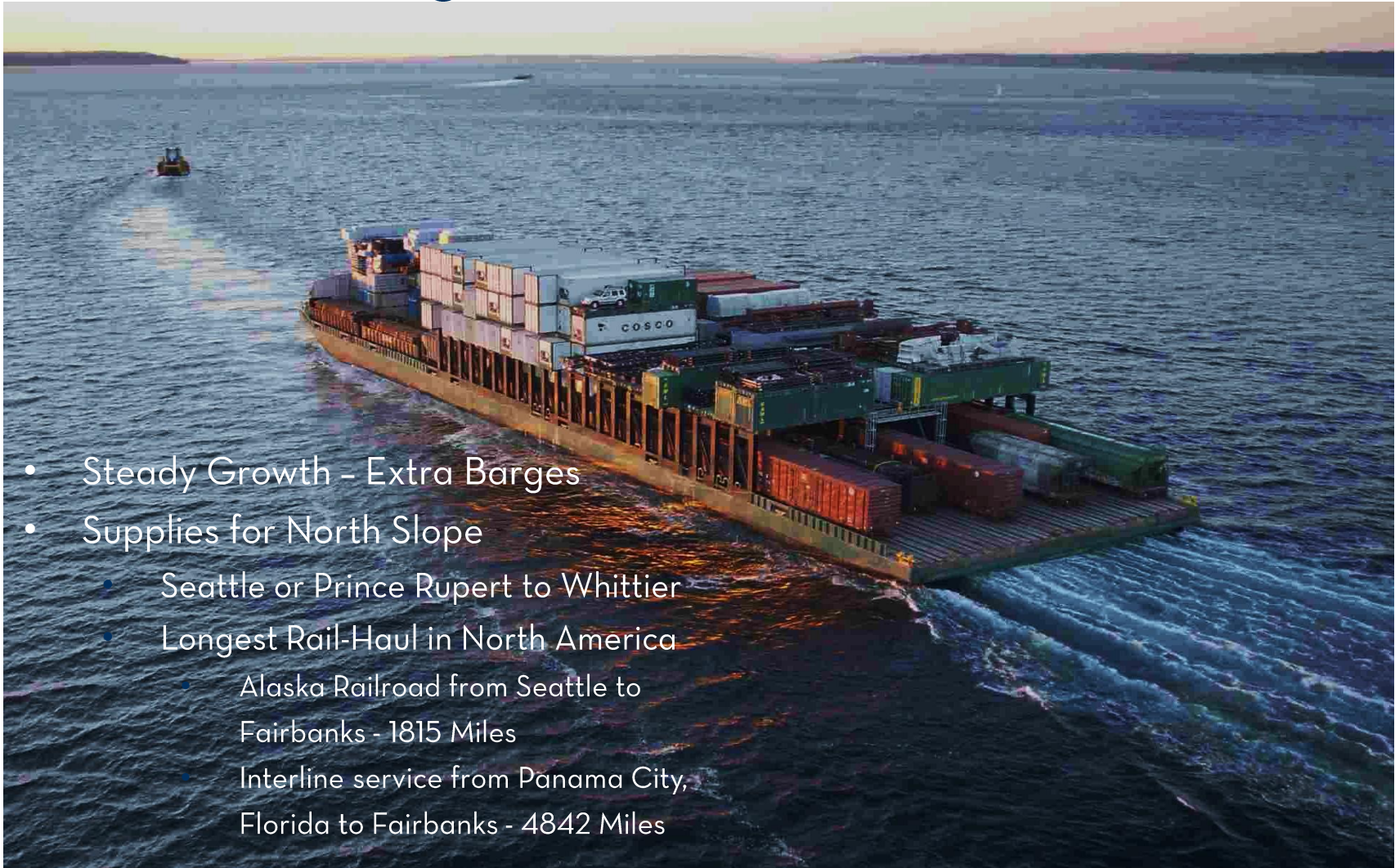


- Built in 1966
- Usable to 2023/2024
- Maintenance \$500K - \$1 million/Year

- 200,000+ visitors in 2019
- 96 Berth Days, 14 Double Days
- \$60+ million replacement cost



# Interline Barge Service



- Steady Growth - Extra Barges
- Supplies for North Slope
  - Seattle or Prince Rupert to Whittier
  - Longest Rail-Haul in North America
    - Alaska Railroad from Seattle to Fairbanks - 1815 Miles
    - Interline service from Panama City, Florida to Fairbanks - 4842 Miles



# ➤ Energy to Interior

- LNG by Rail
  - 2016 Demonstration Project
    - First in U.S. to receive authority
  - First Responder Training
    - 10 Sessions along Railbelt
    - 200+ First Responders
  - Storage Facility in Fairbanks
- PetroStar
  - Refined Petroleum from Valdez
  - Purchased Storage at Port of Alaska, Anchorage
  - Built New Storage Facility in Fairbanks



# ➤ Alaska to Alberta

- Signed agreement with A2A
- 460 process
- Presidential Permit



# ➤ ARRC Centennial - 2023



WATCH THIS SPACE





THANK YOU

