



NANA AND AN OPENING ARCTIC



11 communities

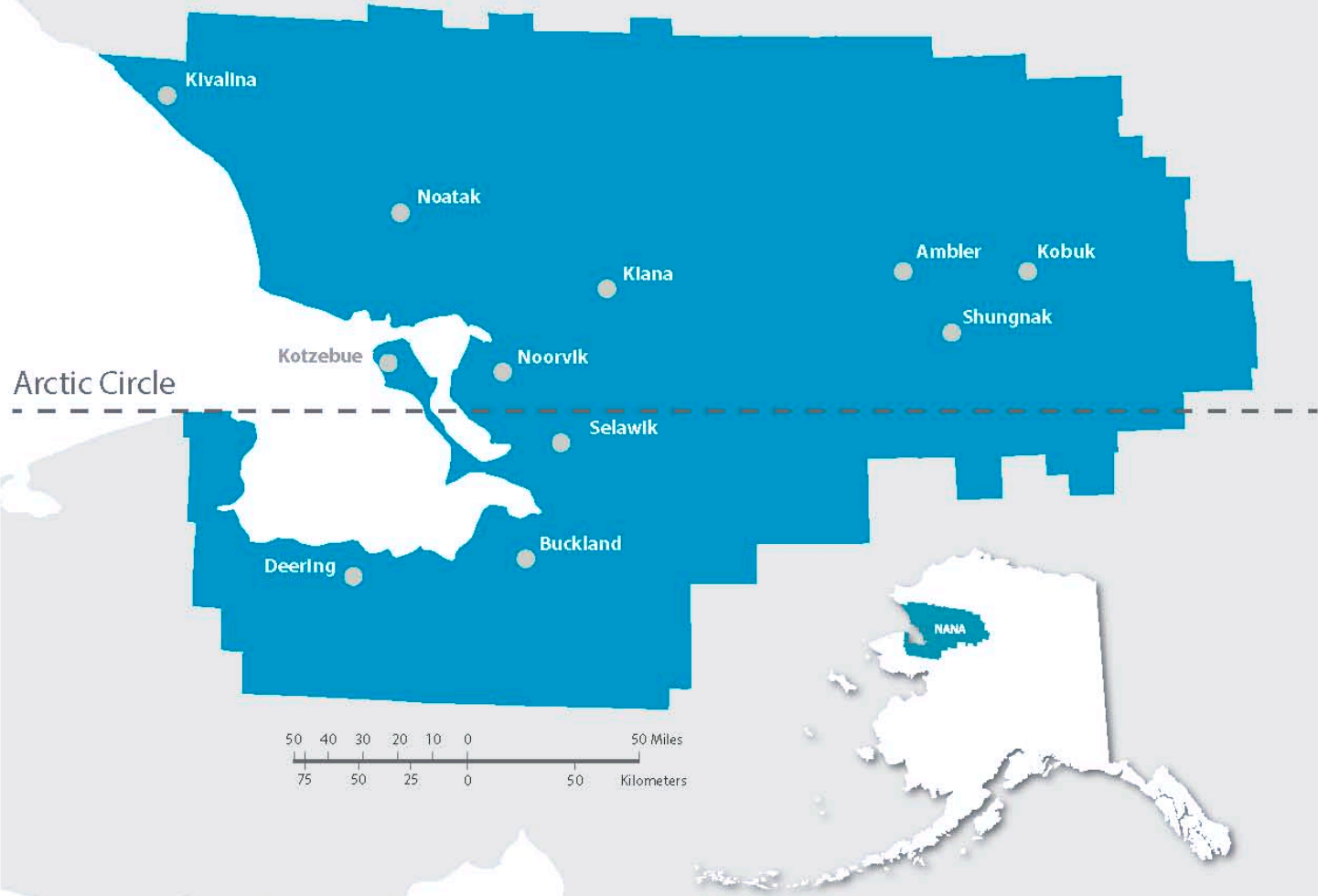
8 above the Arctic Circle.

13,800 Iñupiat shareholders, half live in region.

No roads.

38,000 sq. mi. (size of Indiana)

61 % more expensive in region than urban Alaska.



OUR MISSION

NANA is a **for-profit corporation** with a social responsibility.

Our job is to **create profits** that are then used to benefit our people.



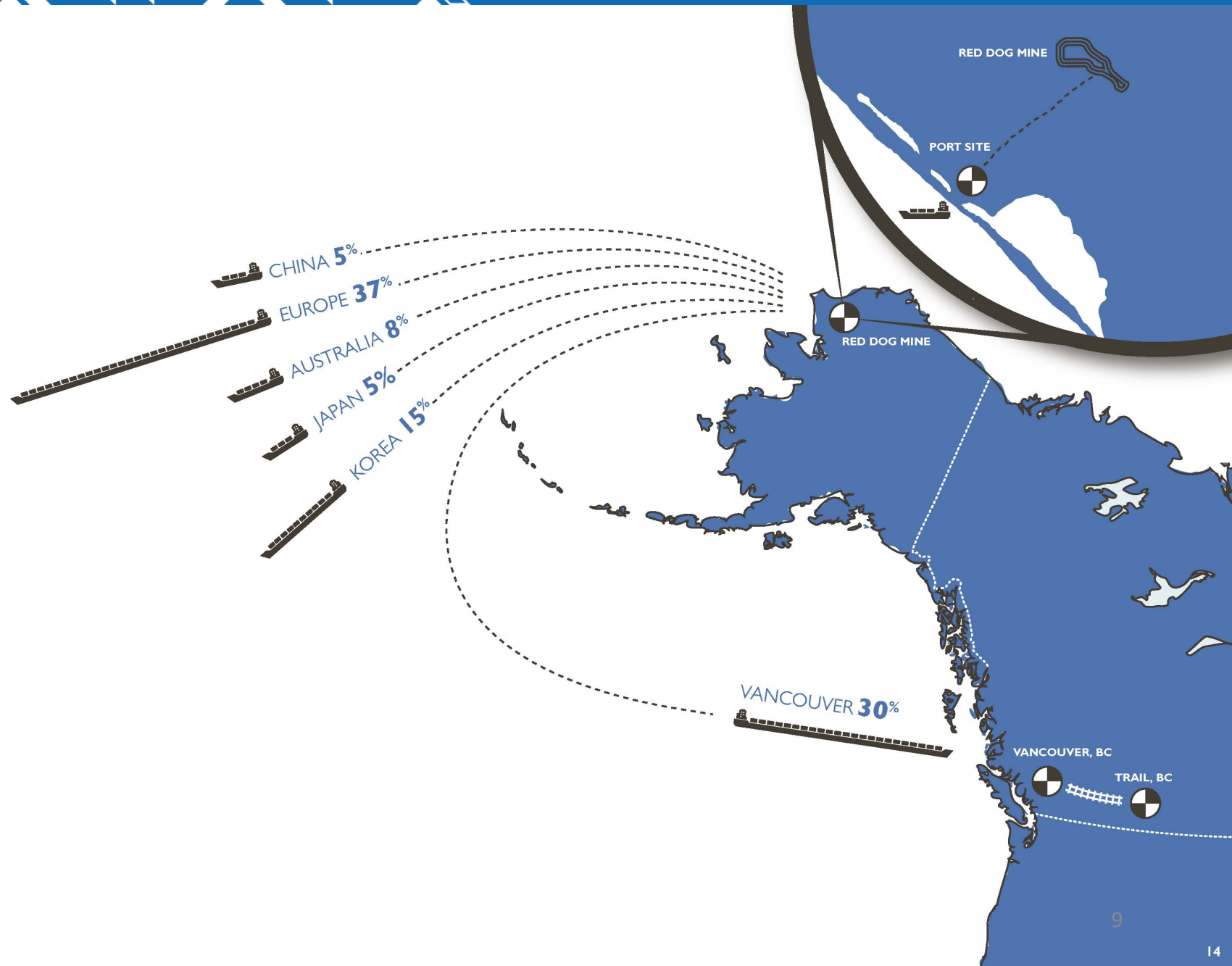






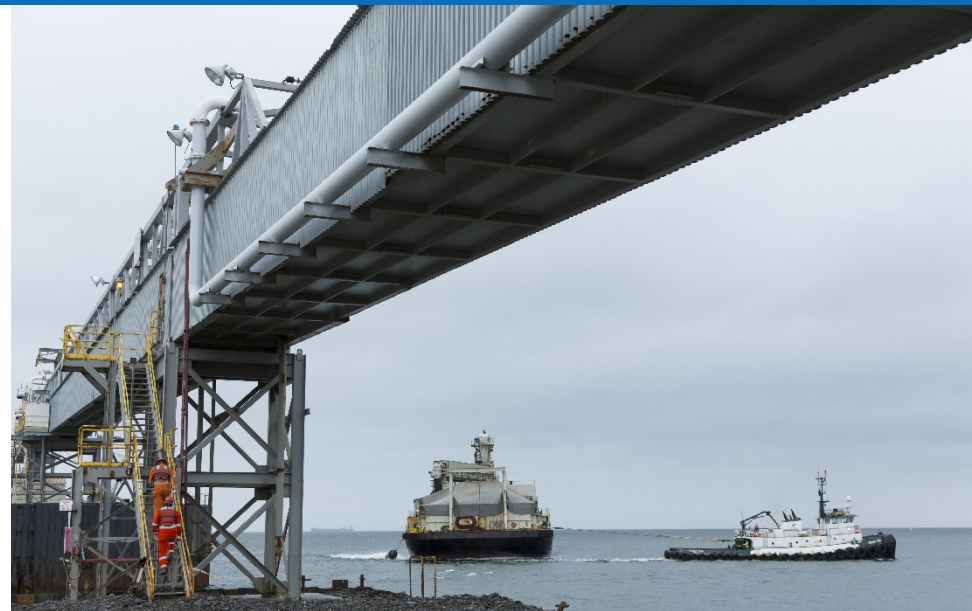






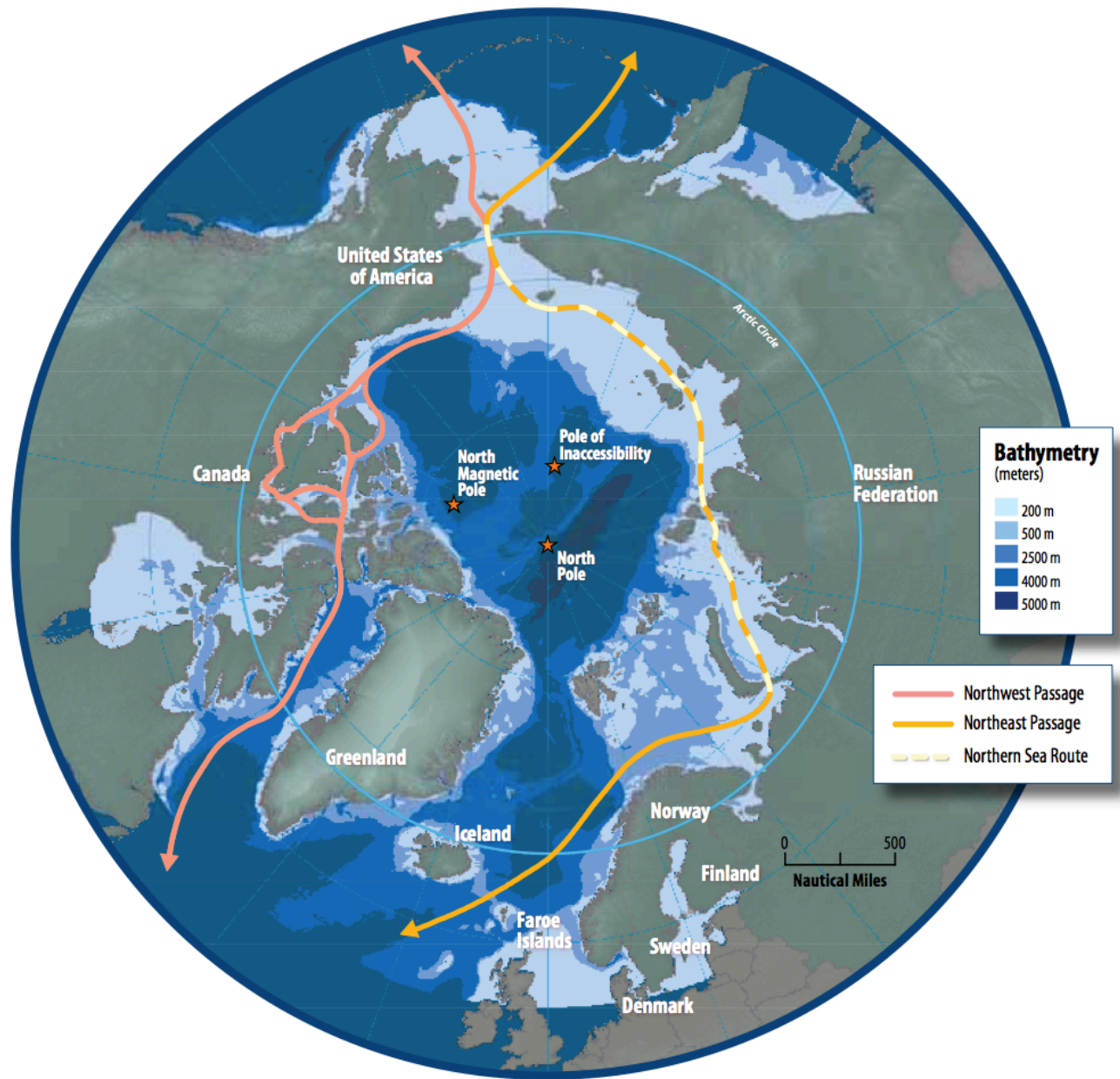
2015 Shipping Season

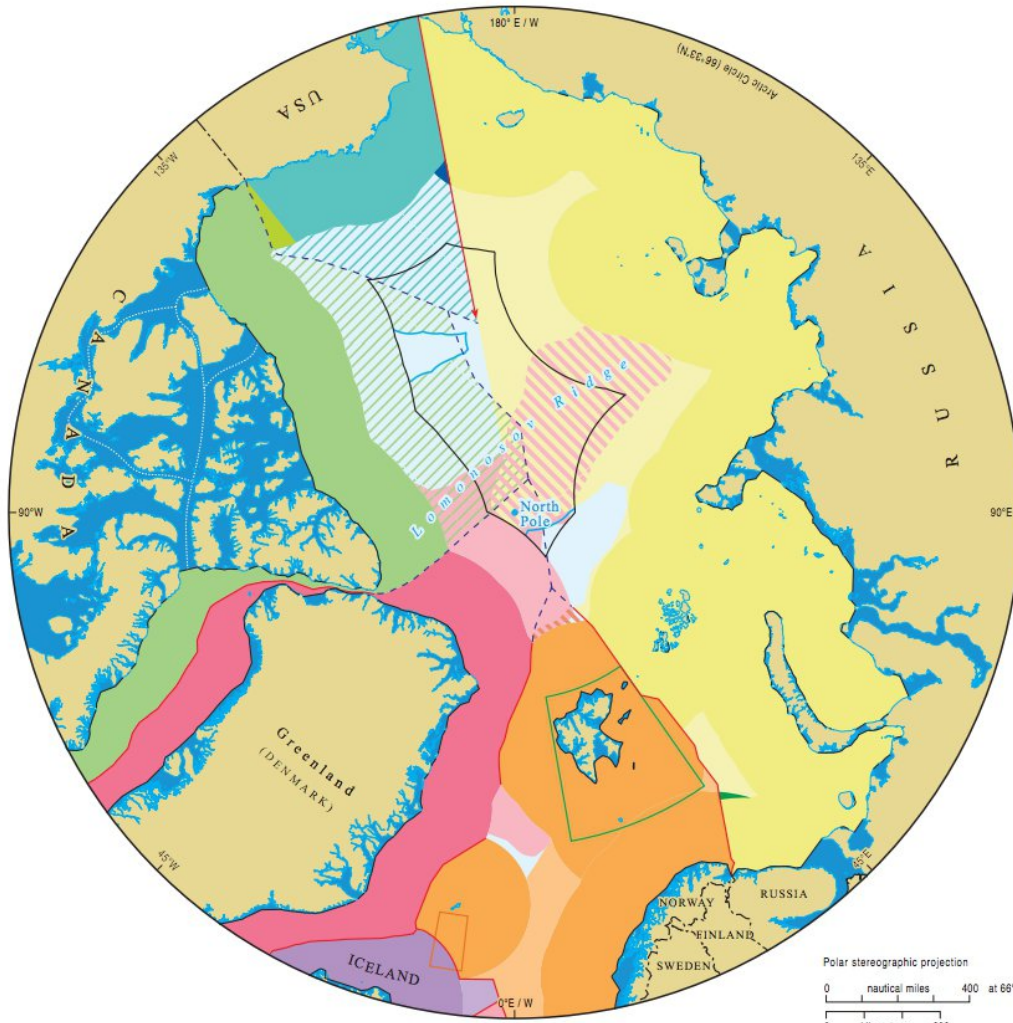
- 1.1 M WMT of Zn
- 230,000 WMT of Pb



7 (i) Sharing since 1989

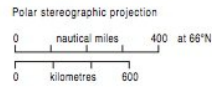
- \$1.1 B in Net Proceeds
- \$800 M shared through 7 (i)

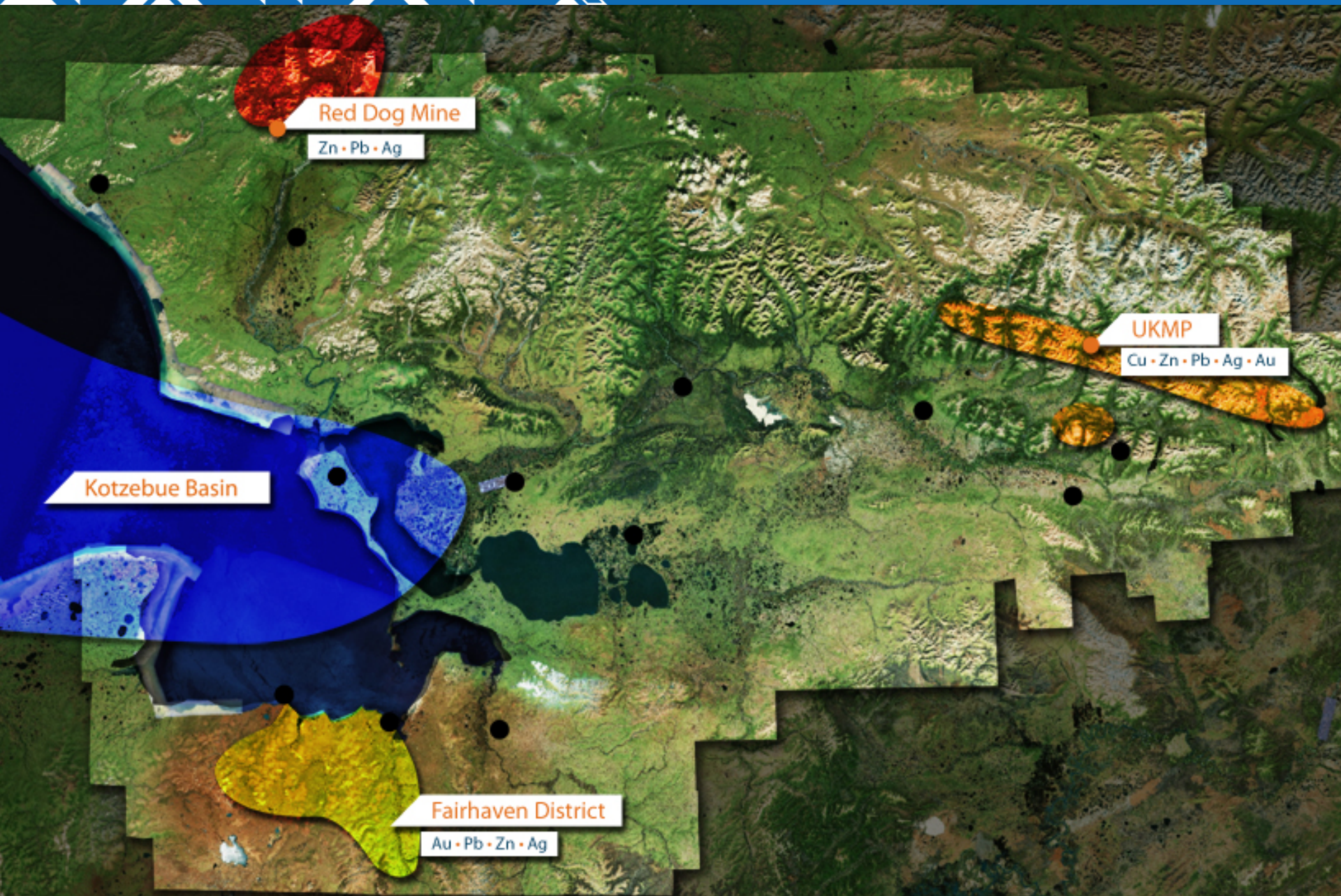




- Internal waters
- Canada territorial sea and exclusive economic zone (EEZ)
- Potential Canada continental shelf beyond 200 M (see note 1)
- Denmark territorial sea and EEZ
- Denmark claimed continental shelf beyond 200 M (note 2)
- Iceland territorial sea and EEZ
- Iceland claimed continental shelf beyond 200 M (note 2)
- Norway territorial sea and EEZ / Fishery zone (Jan Mayen) / Fishery protection zone (Svalbard)
- Norway claimed continental shelf beyond 200 M (note 3)
- Russia territorial sea and EEZ
- Russia claimed continental shelf beyond 200 M (note 4)
- Norway-Russia Special Area (note 5)
- USA territorial sea and EEZ
- Potential USA continental shelf beyond 200 M (note 1)
- Overlapping Canada / USA EEZ (note 6)
- Russia-USA Eastern Special Area (note 7)
- Unclaimed or unclaimable continental shelf (note 1)

- Straight baselines
- Agreed boundary
- Median line
- 350 M from baselines (note 1)
- 100 M from 2500 m isobath (beyond 350 M from baselines) (note 1)
- Svalbard treaty area (note 8)
- Iceland-Norway joint zone (note 9)
- Main 'Northwest Passage' shipping routes through Canada claimed internal waters



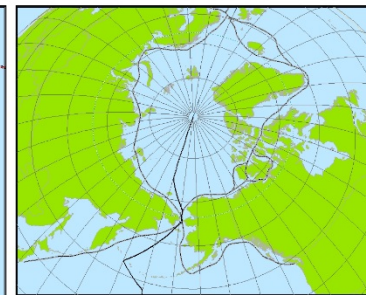
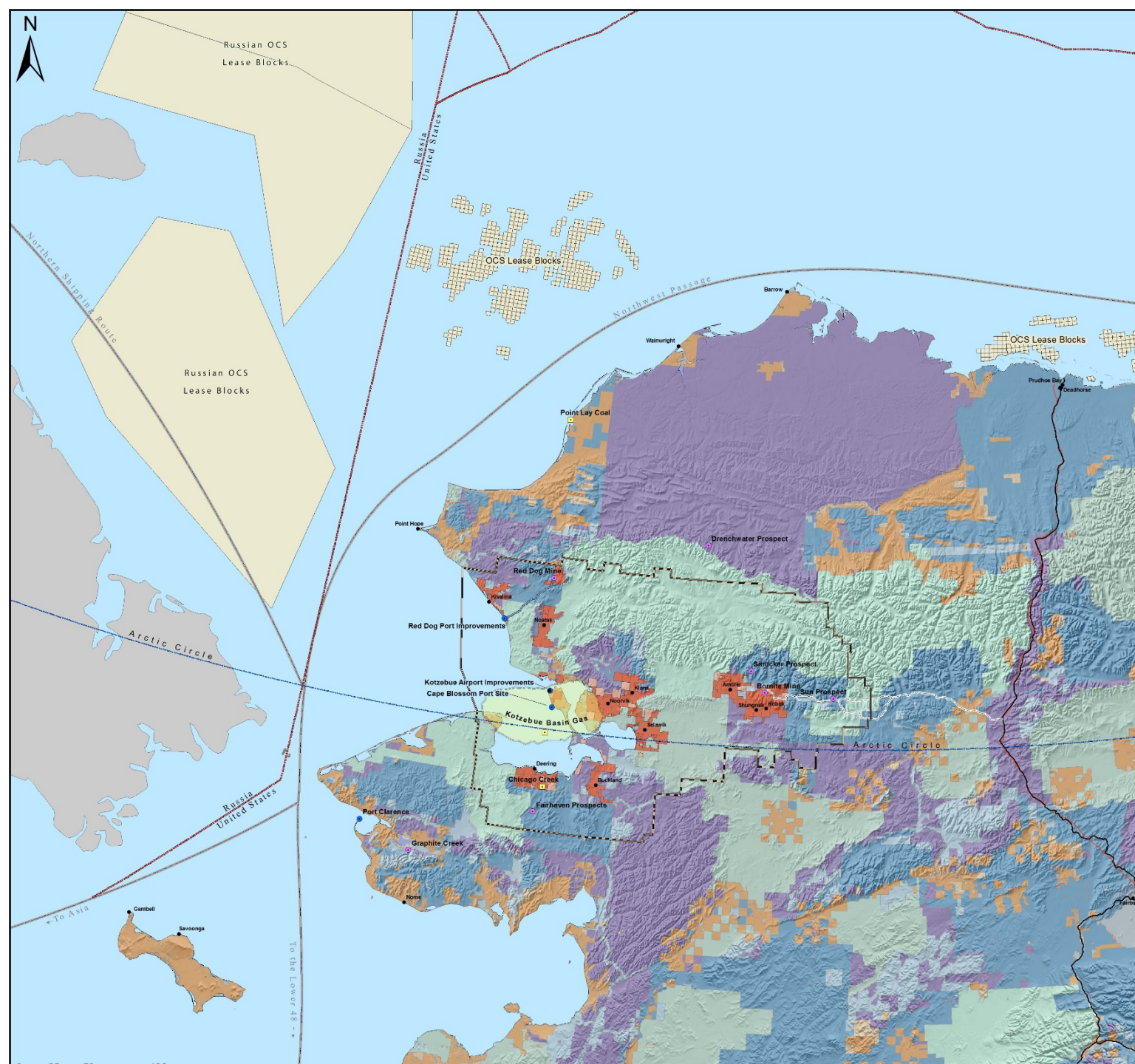


MULTI-REGION COOPERATION

Partnership between NANA, BSNC and ASRC

Working on transportation, infrastructure and energy issues.





- Selected Cities and Villages
- Opportunity**
- Infrastructure
- Mineral
- Oil, Gas and Coal
- Russia/U.S. Maritime Border
- Proposed Brooks Range East Corridor
- Major Roads
- Red Dog Mine Road
- TAPS
- Shipping Lanes
- NANA Boundary
- OCS Lease Blocks
- NANA Owned Lands
- NANA Selected Lands
- Bureau of Land Management
- Fish and Wildlife Service
- Forest Service
- National Park Service
- Native Patent or IC
- Native Selected
- State Patent or TA
- State Selected

Date: 10/14/2014
NOT FOR NAVIGATION
 Coordinate System: NAD 1983 Alaska Albers

This product is for informational purposes and does not replace the legal record of survey, land status, mining claims, or title or any other official record. Users of this information should refer to the primary sources of the information, including but not limited to Alaska Department of Natural Resources, U.S. Bureau of Land Management, and the U.S. Census Bureau. NANA makes no claims, guarantee or warranties of any kind, about the accuracy, completeness, or content of this product, and expressly disclaims liability for errors and omissions in the contents of this product.

To the Lower 48 →

Taikuu

