

ALASKA NATIONAL INTEREST LANDS CONSERVATION ACT (ANILCA)

ANILCA, Section 201(4)(b) states,

“Congress finds that there is a need for access for surface transportation purposes across the Western (Kobuk River) unit of the Gates of the Arctic National Preserve (**from the Ambler Mining District to the Alaska Pipeline Haul Road**) and the Secretary shall permit such access in accordance with the provisions of this subsection.”

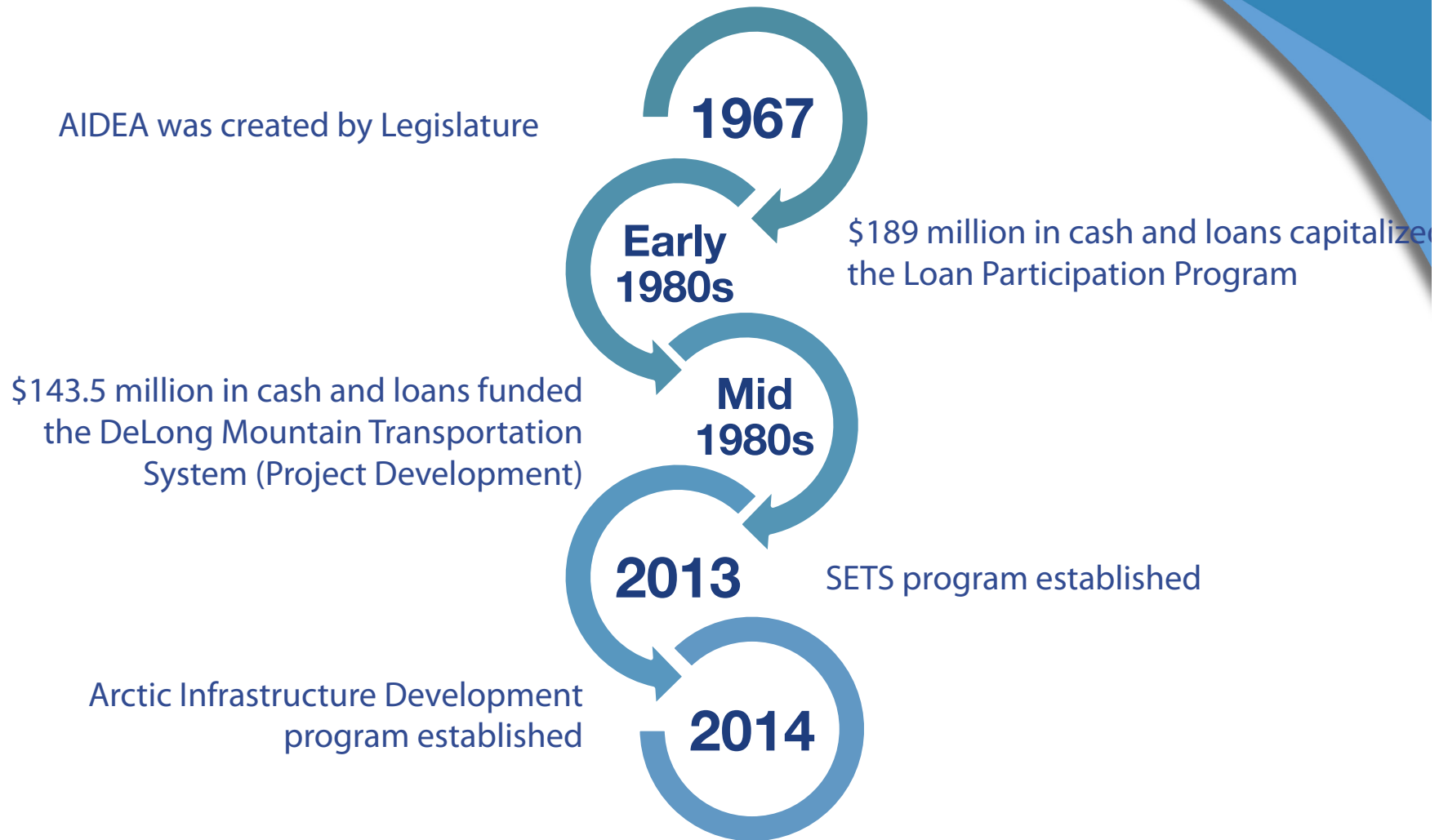


ALASKA'S DEVELOPMENT FINANCE AUTHORITY

AIDEA Statewide Update
Resource Development Council
February 4, 2016

Investing in Alaskans

History



AIDEA Governance



Shareholders

- Population of Alaska 735,000



Shareholder Representatives

- Governor of Alaska
- Alaska Legislature



AIDEA Board

- Commissioner - Dept. of Revenue
- Commissioner - DCCED
- 5 successful Alaska business people



AIDEA Staff

AIDEA – Funds and Special Projects

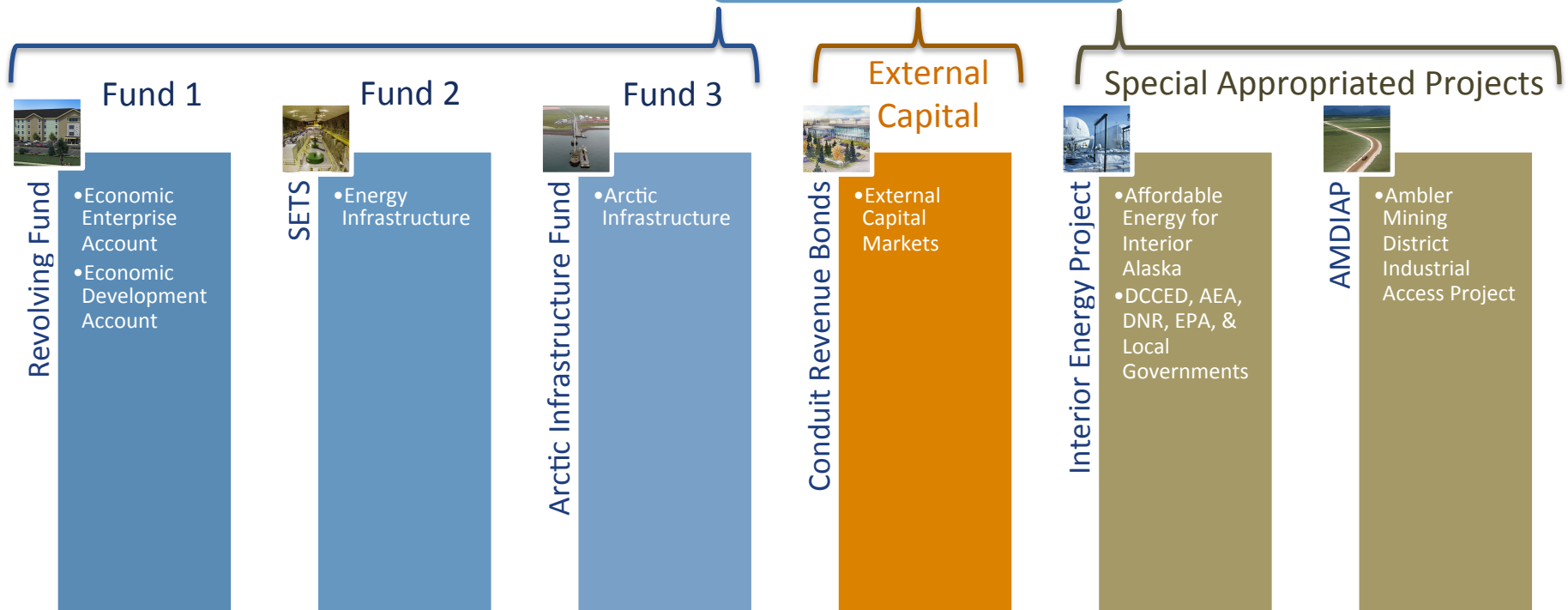


AIDEA Board

- Commissioner - Dept. of Revenue
- Commissioner - DCCED
- 5 successful Alaska business people



AIDEA Staff



Strong Balance Sheet & Credit Rating

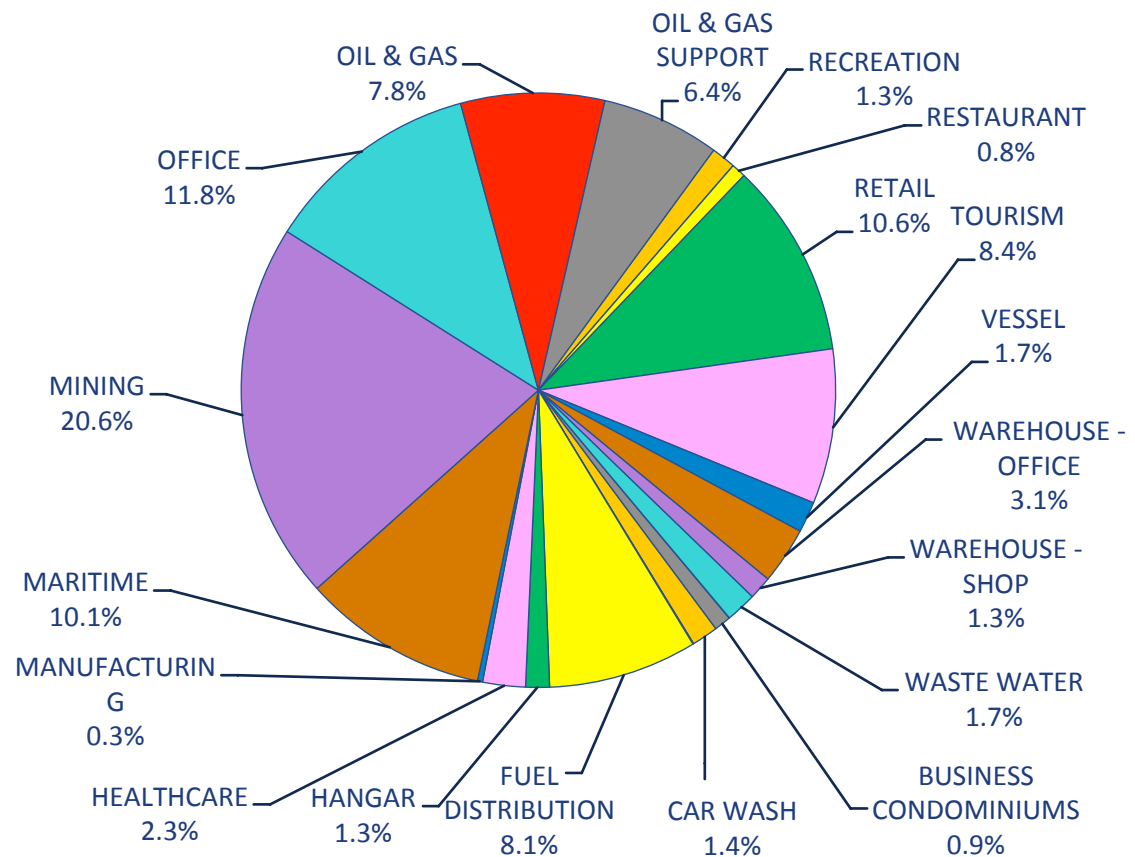


**STANDARD
& POOR'S**
RATINGS SERVICES

AA+

AIDEA's credibility with the Rating Agencies has yielded reduced borrowing costs and market credibility

**AIDEA REVOLVING FUND
LOAN AND PROJECT PORTFOLIO**
As of December 31, 2015



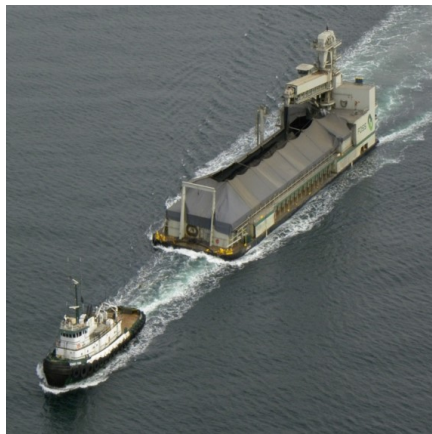
Infrastructure Development Projects



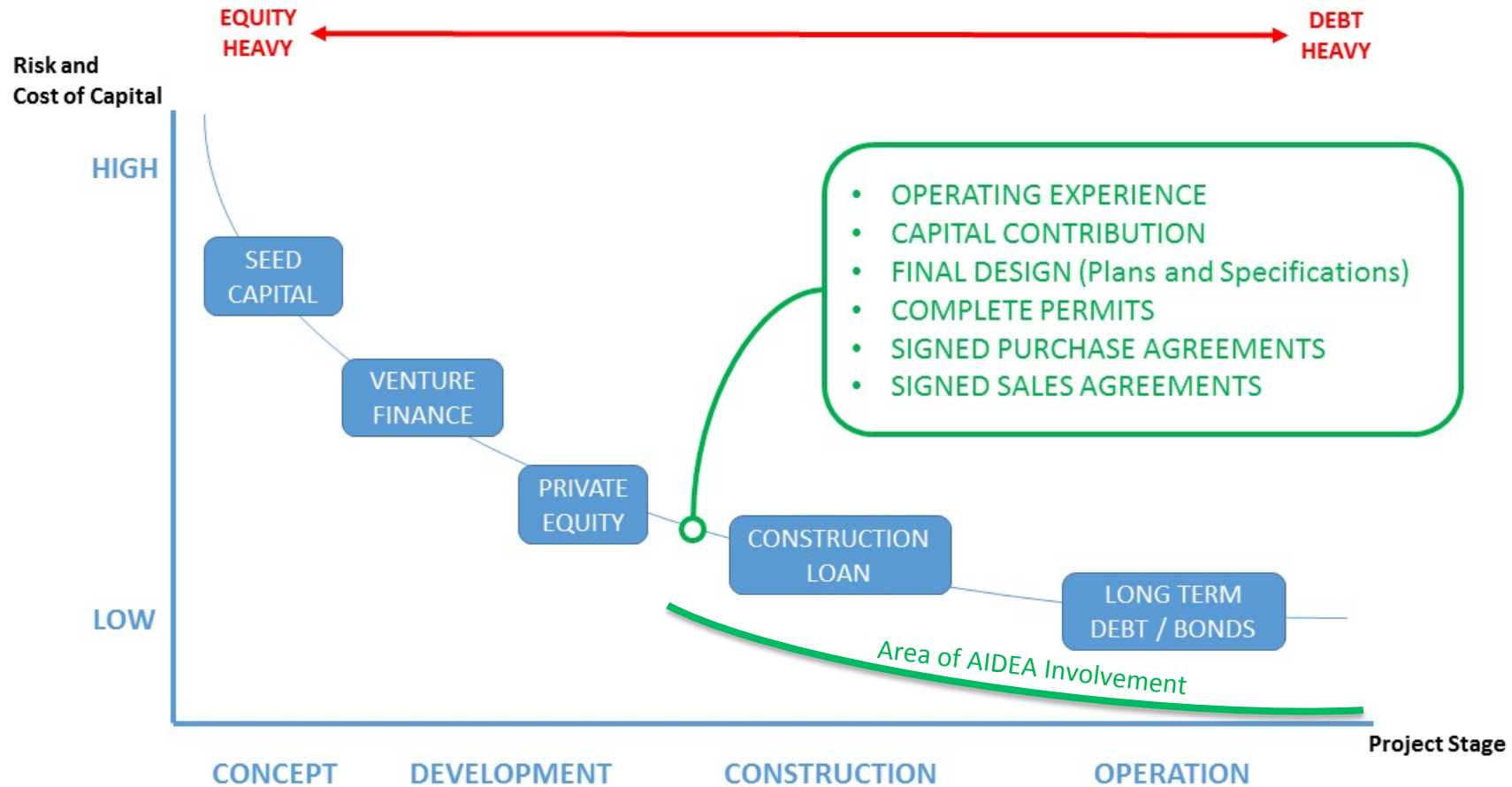
AIDEA works with project partners to finance large industrial projects throughout the State of Alaska.

Projects support industrial development including the mining industry, oil and natural gas, marine/fisheries and logistics.

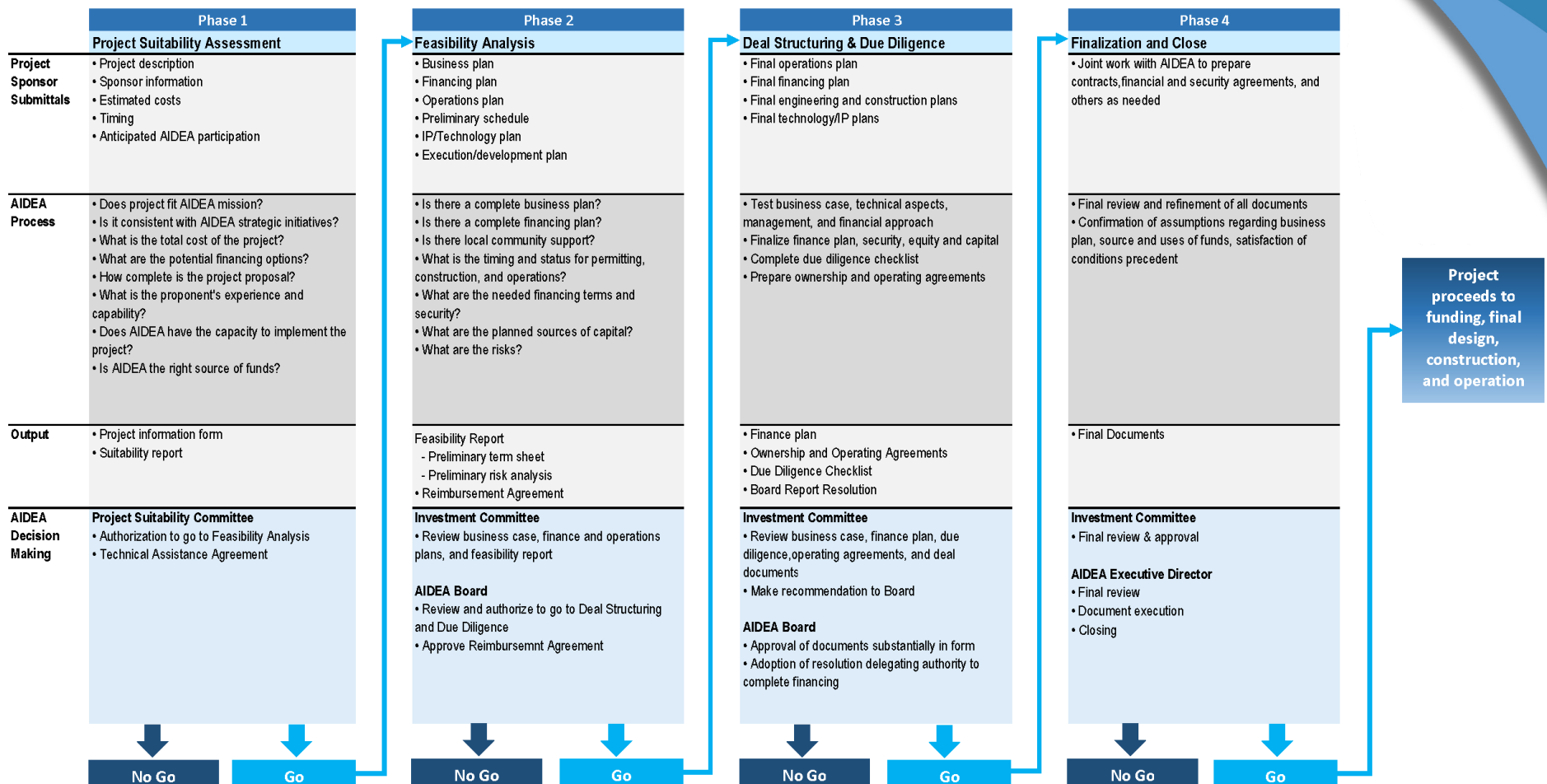
AIDEA finances industrial roads, ports, harbors, and facilities.



AIDEA - Best Fit Projects



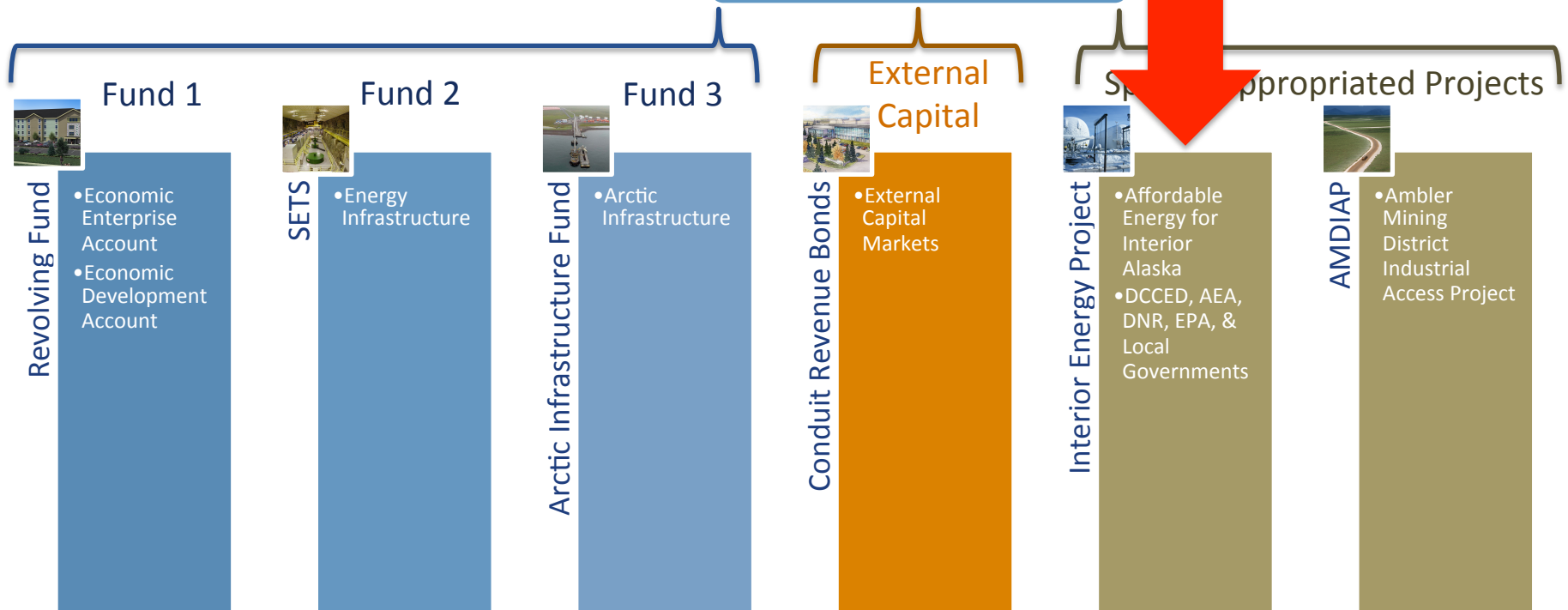
Analysis & Decision-Making



AIDEA – Funds and Special Projects



**Brief
Update**



Interior Energy Project: Overview



- Supply natural gas to Interior Alaska:
 - At the lowest cost possible
 - As many Alaska customers as possible
 - As soon as possible
- IEP investments complement eventual sources of gas supply from a natural gas pipe line
- Lower PM2.5 in nonattainment areas of Interior
- Special Appropriated Project
 - Funded and directed by the Legislature
 - Managed outside AIDEA's Revolving Fund



Interior Energy Project: Status



- Evaluating two potential private partners to develop LNG plant
 - Salix: Cook Inlet
 - Spectrum: North Slope
- Supply chain components
 - Natural gas supply: facilitating agreements from Cook Inlet and North Slope
 - Transportation: Large capacity trailer tested
 - Distribution: 130 miles of new pipe in the Interior
- Pentex acquisition
 - Transitional ownership
 - Eventual integration with the IGU



AIDEA – Funds and Special Projects



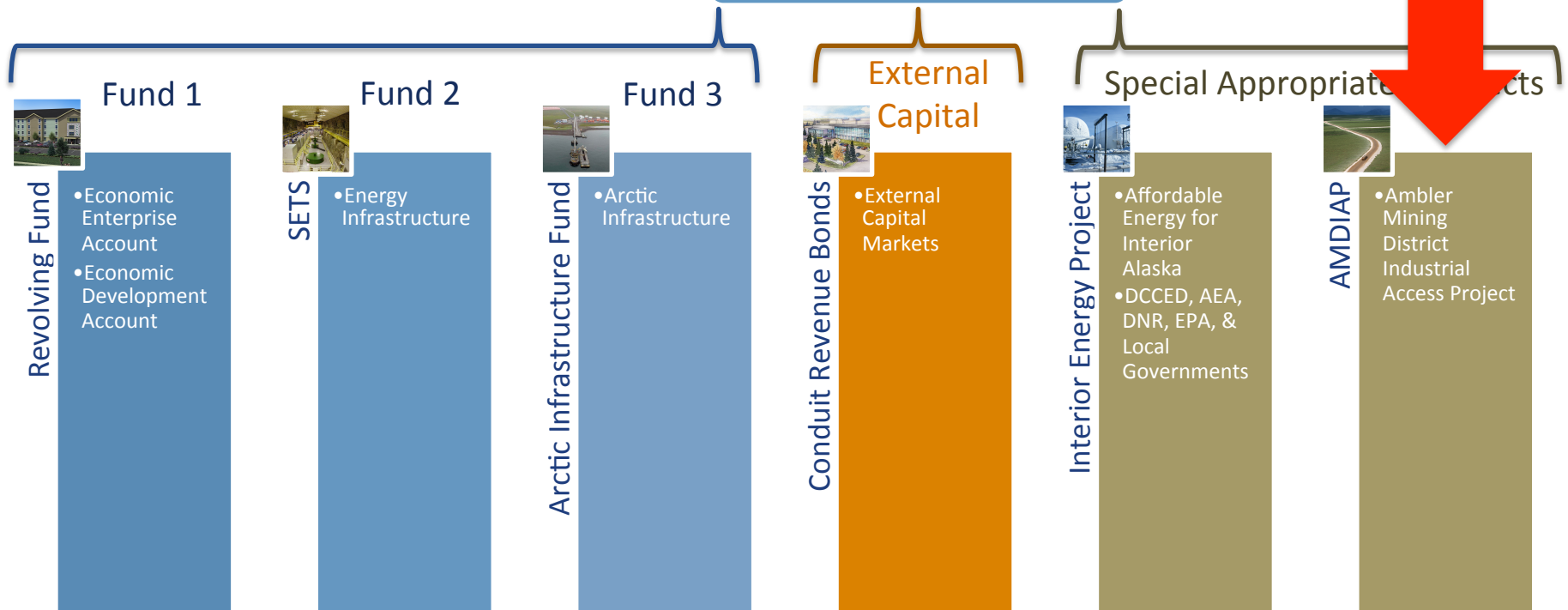
AIDEA Board

- Commissioner - Dept. of Revenue
- Commissioner - DCCED
- 5 successful Alaska business people

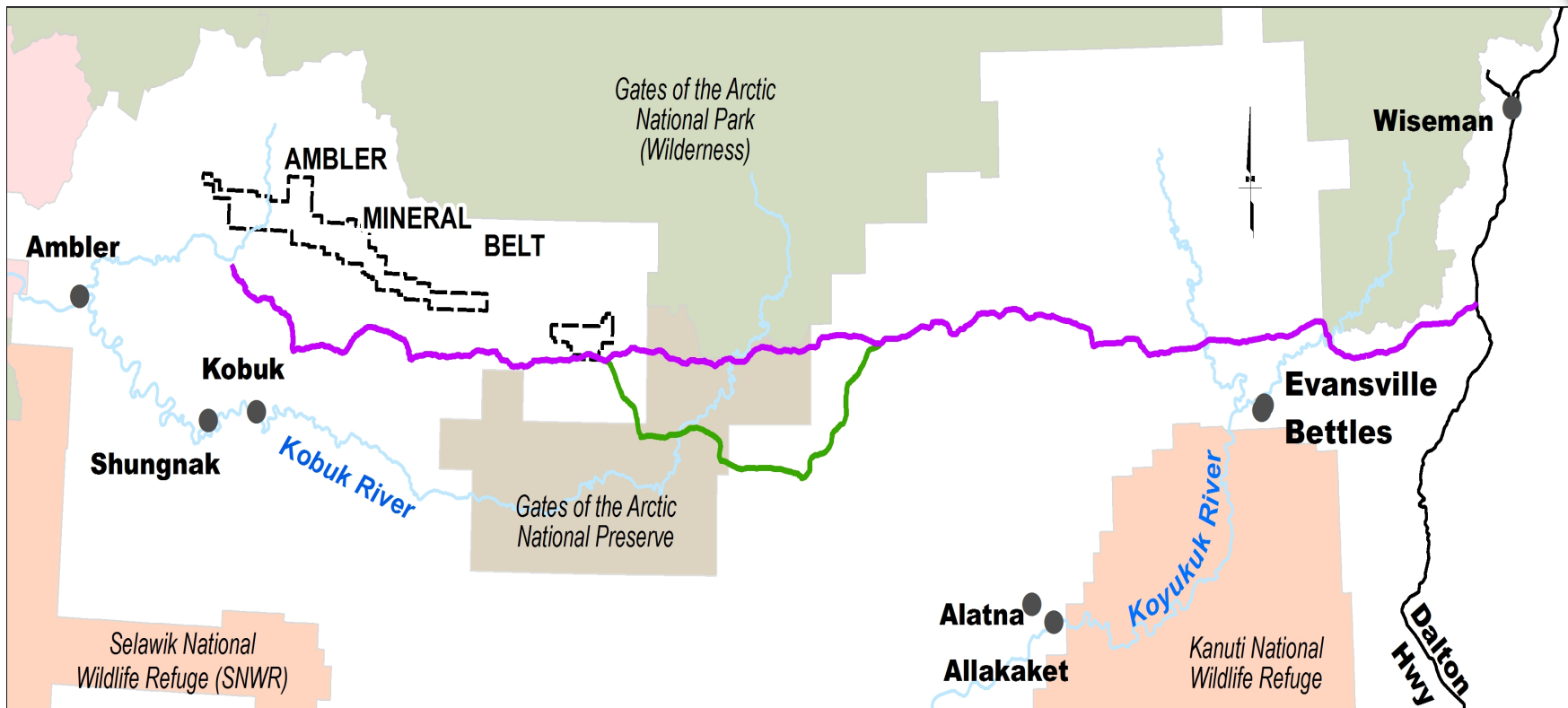


AIDEA Staff

**Brief
Update**



Ambler Route: as Submitted



Ambler Mining District Resources



- Known Mineral Deposits of the Brooks Range, Alaska

- US Department of the Interior
Geological Survey
by Donald Grybeck, 1977

☐ Gold

☐ Silver

☐ Copper

☐ Zinc

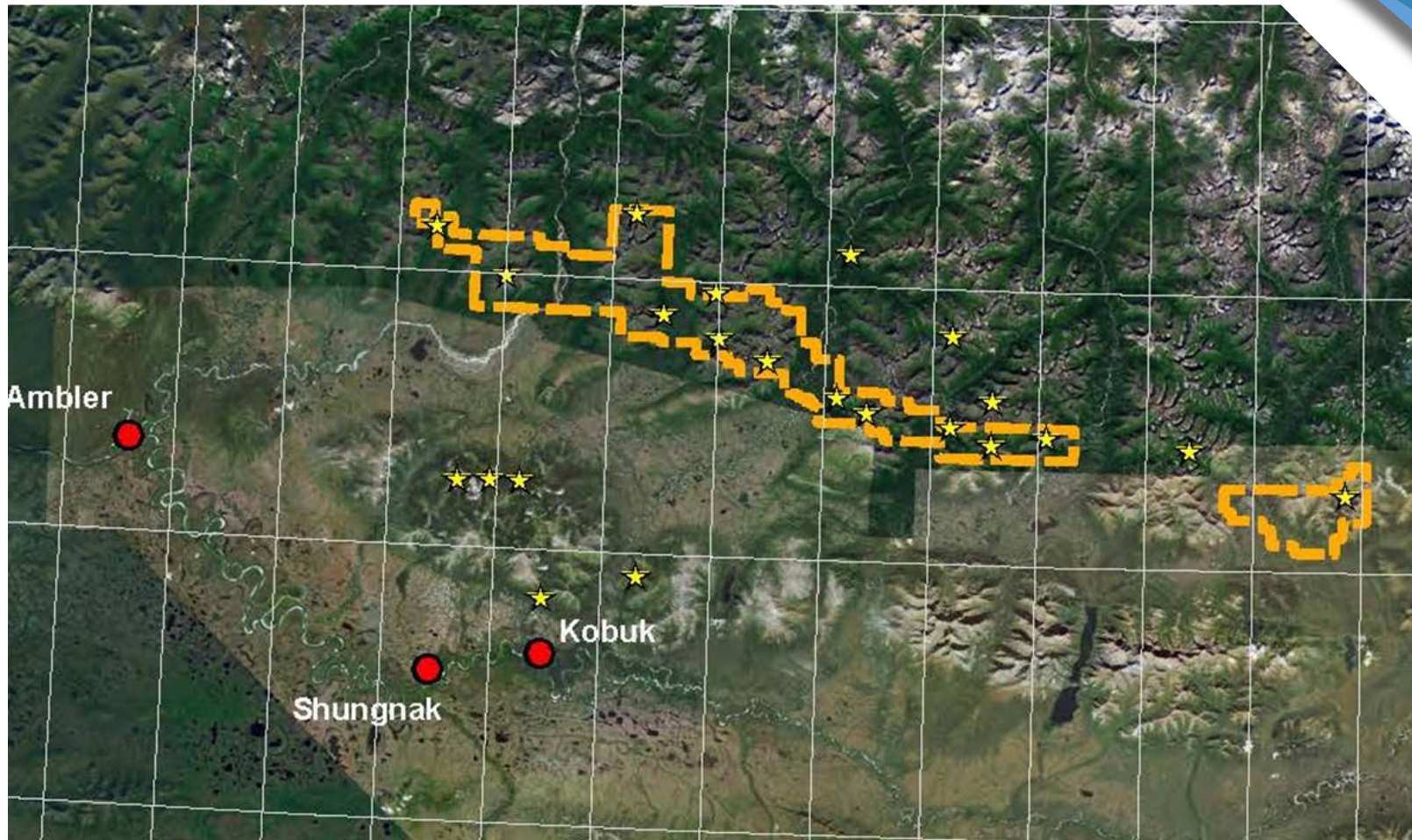
☐ Jade

☐ Molybdenum

☐ Nickel

☐ Tin

Ambler Mining District Resources



For more detailed information Google: DNR “Alaska Mapper”
Click on “Enter Mapping Application” and View the “Mineral Estate Map”

ALASKA NATIONAL INTEREST LANDS CONSERVATION ACT (ANILCA)

ANILCA, Section 201(4)(b) states,

“Congress finds that there is a need for access for surface transportation purposes across the Western (Kobuk River) unit of the Gates of the Arctic National Preserve (**from the Ambler Mining District to the Alaska Pipeline Haul Road**) and the Secretary shall permit such access in accordance with the provisions of this subsection.”



Alaska Industrial Development and Export Authority

813 West Northern Lights Blvd.
Anchorage, Alaska 99503



(907) 771-3000
(888) 300-8534 (Toll Free in Alaska)



#AIDEA



www.aidea.org



Overview



- Development Finance Authority created as a public corporation of the State of Alaska in 1967
- Semi-independent entity, overseen by a seven member Board
- AIDEA is self funded and receives no General Fund assistance
- Provides an annual dividend back to the State of Alaska
 - Total since 1997 - \$380 million
- Revolving Fund \approx \$1.4 billion in assets.
- Standard & Poor's AA+ credit rating for Revolving Fund
- AIDEA has ownership in 8 Alaskan projects

State-Level View



- AIDEA is one tool in the State's economic development tool box
- Provides an interface between industry, federal and state agencies, local government, financial institutions, and project developers
- Facilitates bringing interested parties together
- An equal partner in projects with private sector developers and their financial partners
- Secures and deploys capital in the interest of building Alaska's economic capacity

Role in Economic Development



- Objective vetting agent in the development of Alaska's businesses and infrastructure
- Does not pick winners and losers but has identified strategic sectors that may take priority
- Finances projects that have an economic benefit to the state and provide job opportunities for Alaskans
- Prudent use of public dollars for economic growth, without the use of grants or incentives

