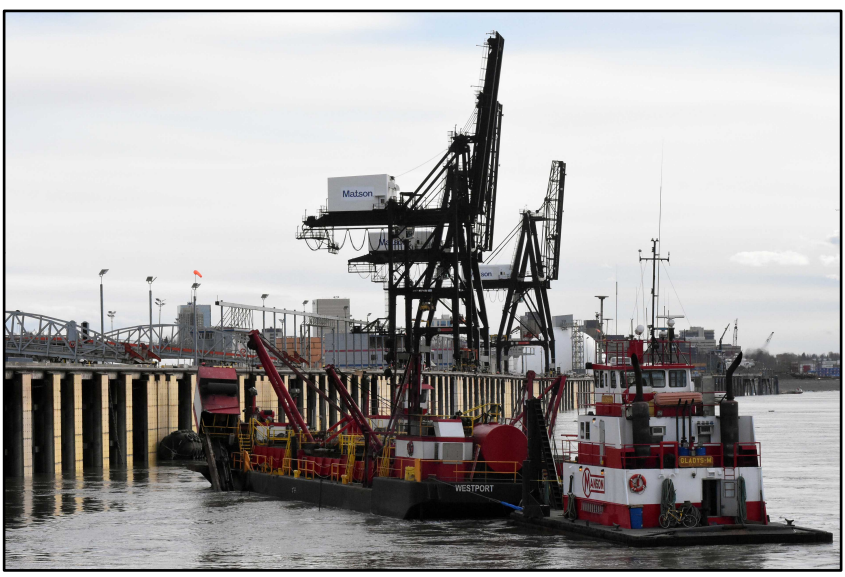




PORT *of*
ANCHORAGE

GOODS FOR ALASKA • SINCE 1961

DOZEN FACTS



Volume:
handles half of
Alaska's inbound,
marine freight,
half of which is
delivered outside
of Anchorage



Versatile



Connected: intermodal hub



U.S. Commercial Strategic Seaport



Critical economic infrastructure



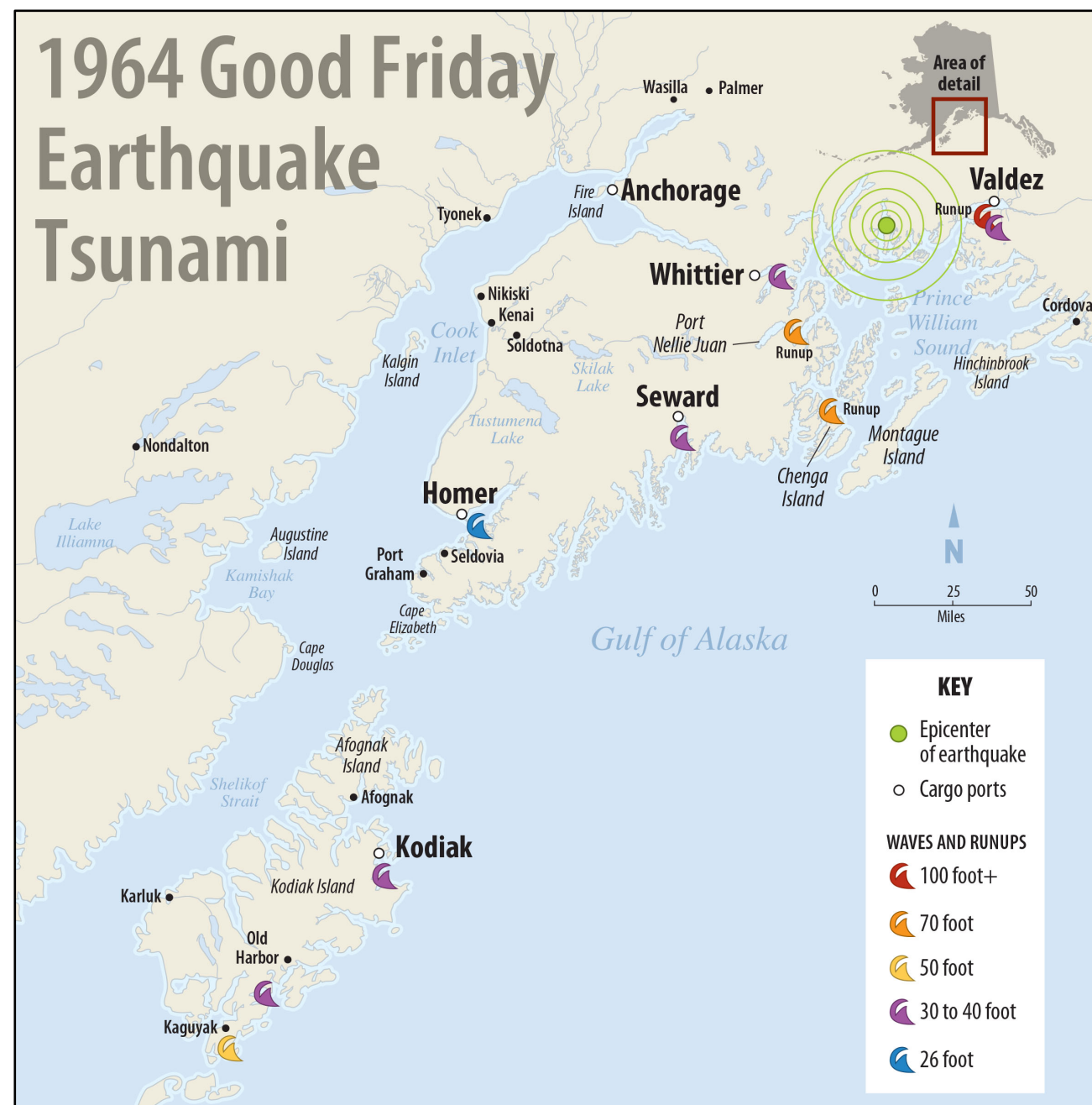
Location(1): population centers and markets



Location(2):
Adjacent to
cargo handling
and transport
infrastructure



Location(3):
Upper Cook Inlet
is virtually
tsunami proof



Foreign Trade Zone



Corrosion



BAND-AIDS®



Time is running out . . .



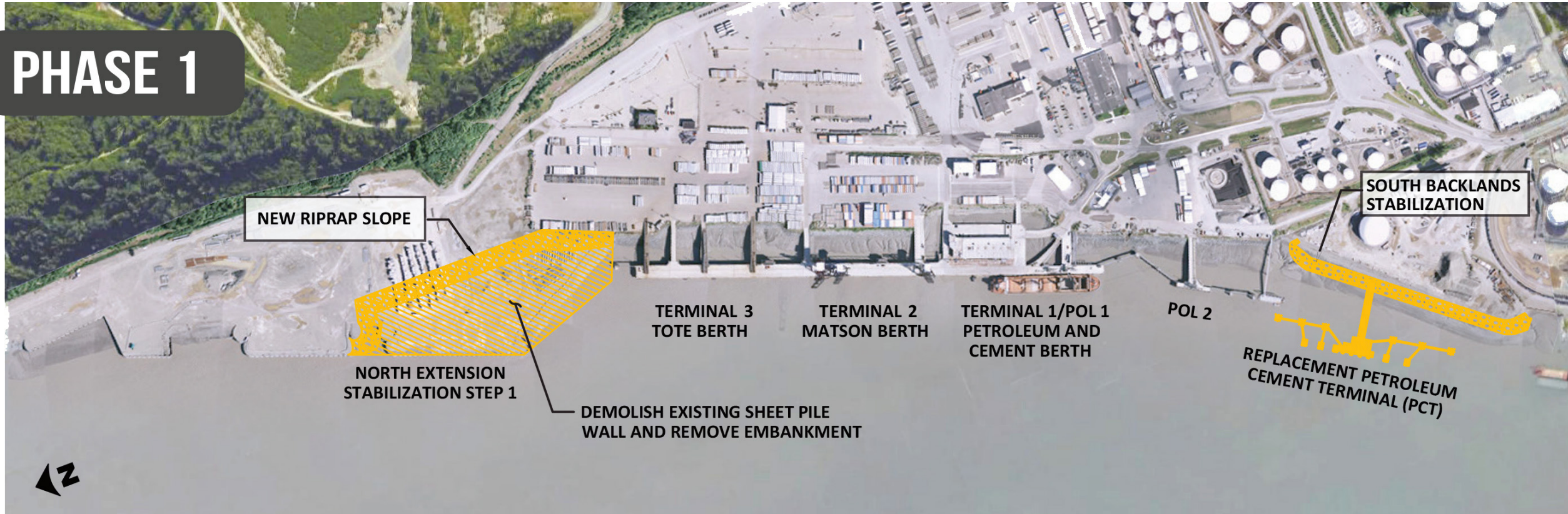
Port modernization/dock replacement

- Improve operational safety and efficiency
- Accommodate modern shipping operations
- Improve resiliency – enable facilities to survive extreme seismic events and Cook Inlet’s harsh marine environment for at least 75 years
- Project construction will take at least seven years



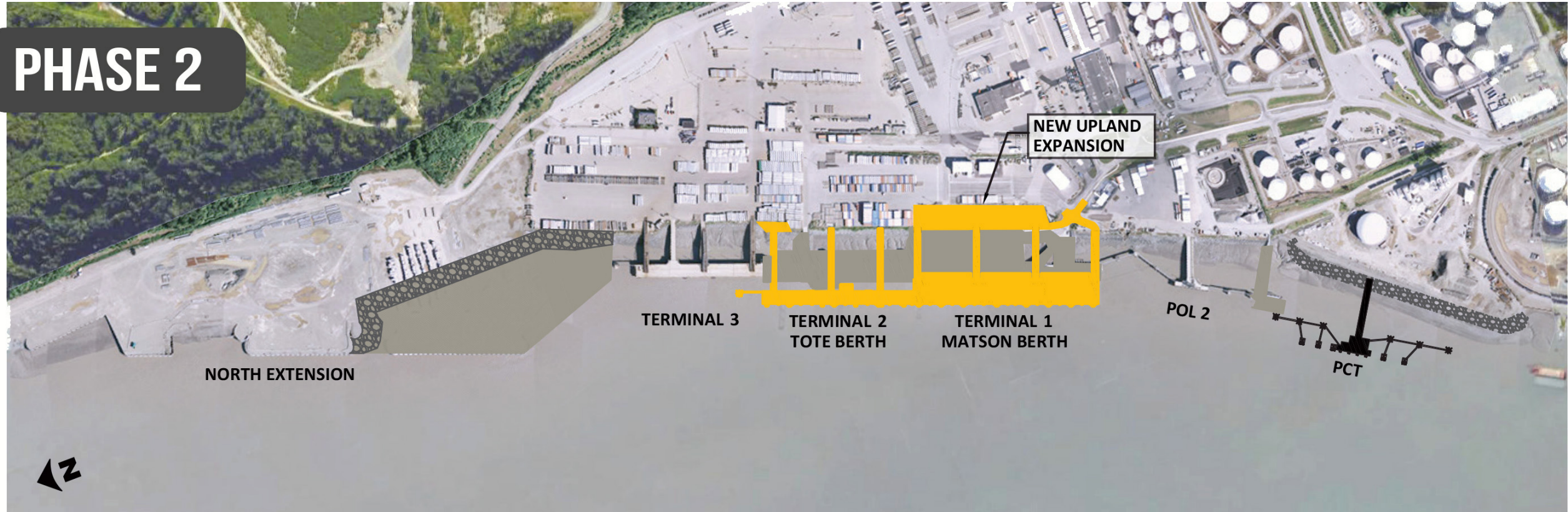
Port Modernization Program

PHASE 1



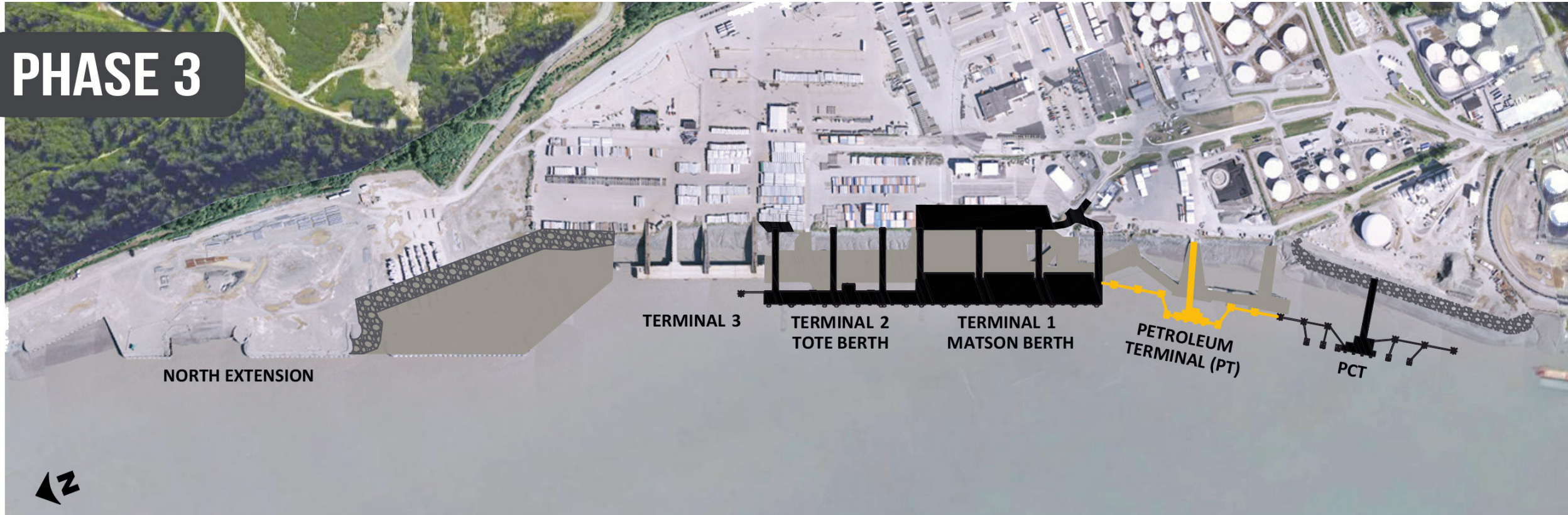
Port Modernization Program

PHASE 2



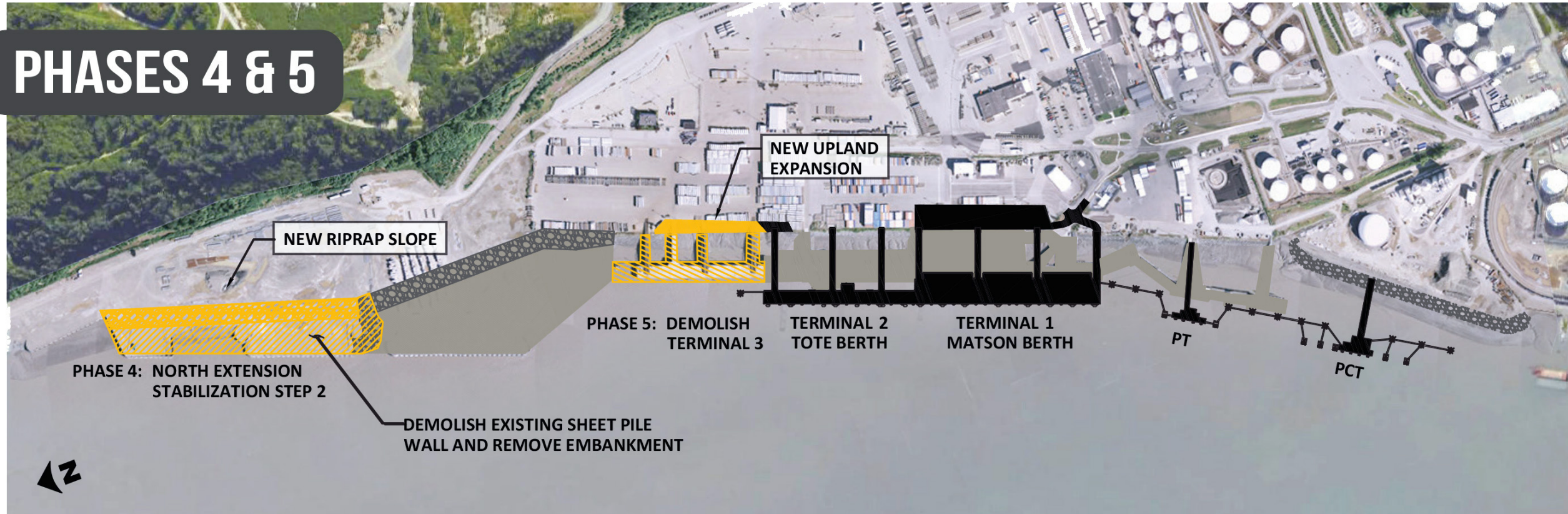
Port Modernization Program

PHASE 3



Port Modernization Program

PHASES 4 & 5





Still

GOODS FOR ALASKA • SINCE 1961